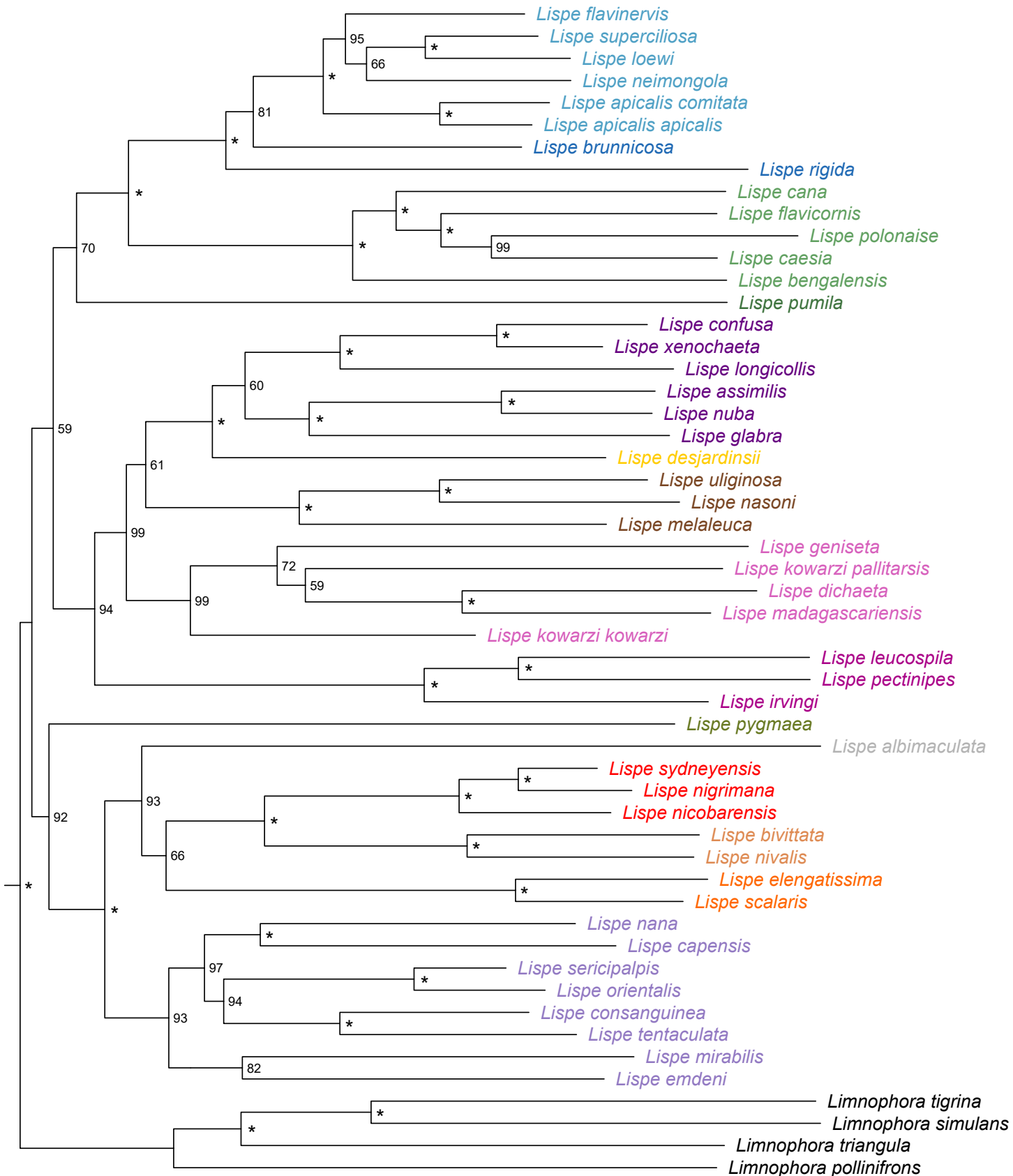


topology A: de novo; CT: 0.75



0.008

- caesia ■ desjardinsii ■ kowarzi ■ leucospila ■ longicollis ■ nicobarensis ■ nivalis ■ palposa
■ pumila ■ pygmaea ■ rigida ■ scalaris ■ tentaculata ■ uliginosa ■ not assigned

