

Figure 3. Left panels: Spectra of 6.7 GHz methanol masers showing the average (solid), high (dashed) and low (dotted) emission levels. Right panels: Light curves of selected 6.7 GHz methanol maser features. Typical measurement uncertainty is shown by the bar for one of the first data points or is comparable to the symbol size.

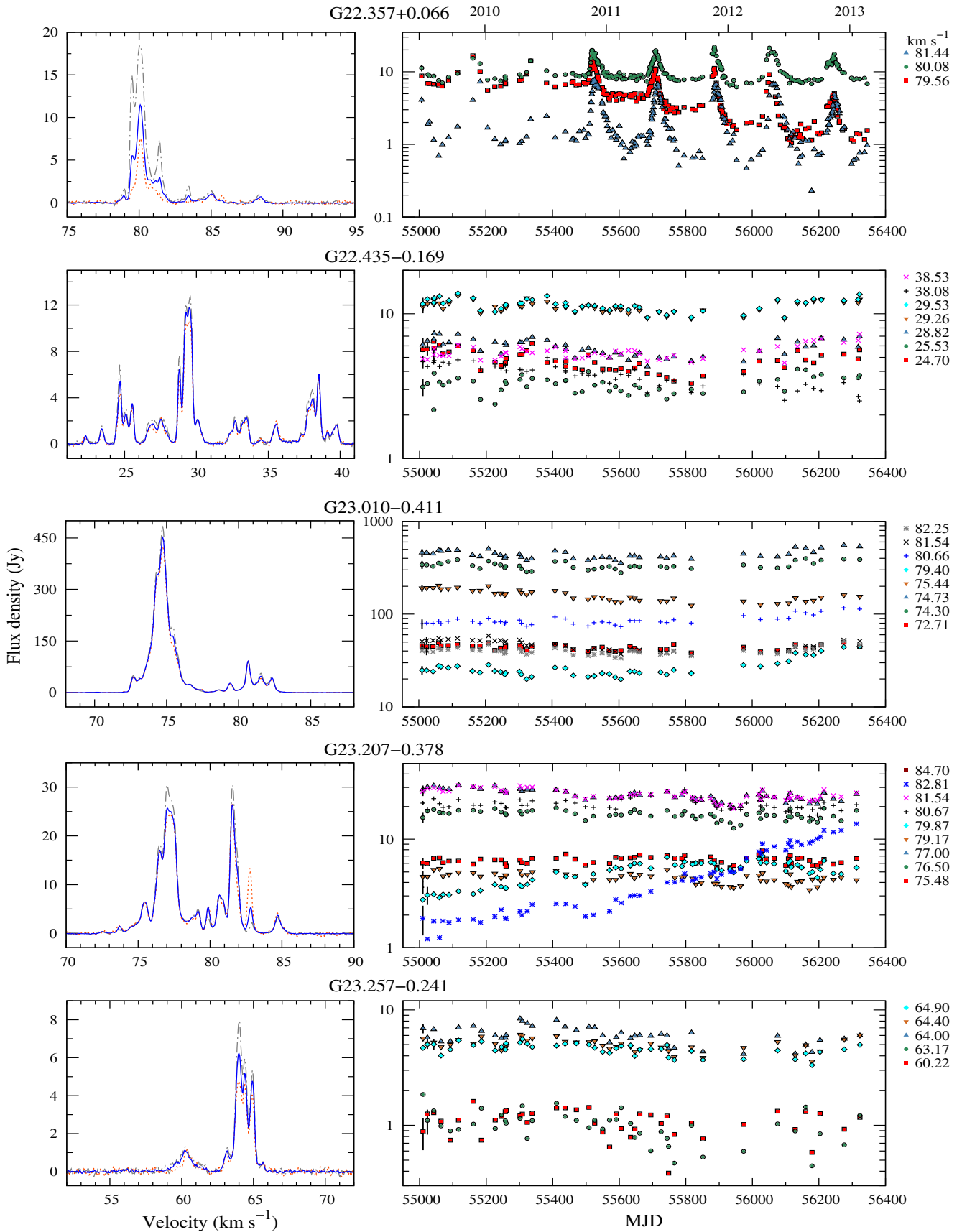


Figure 3 – continued

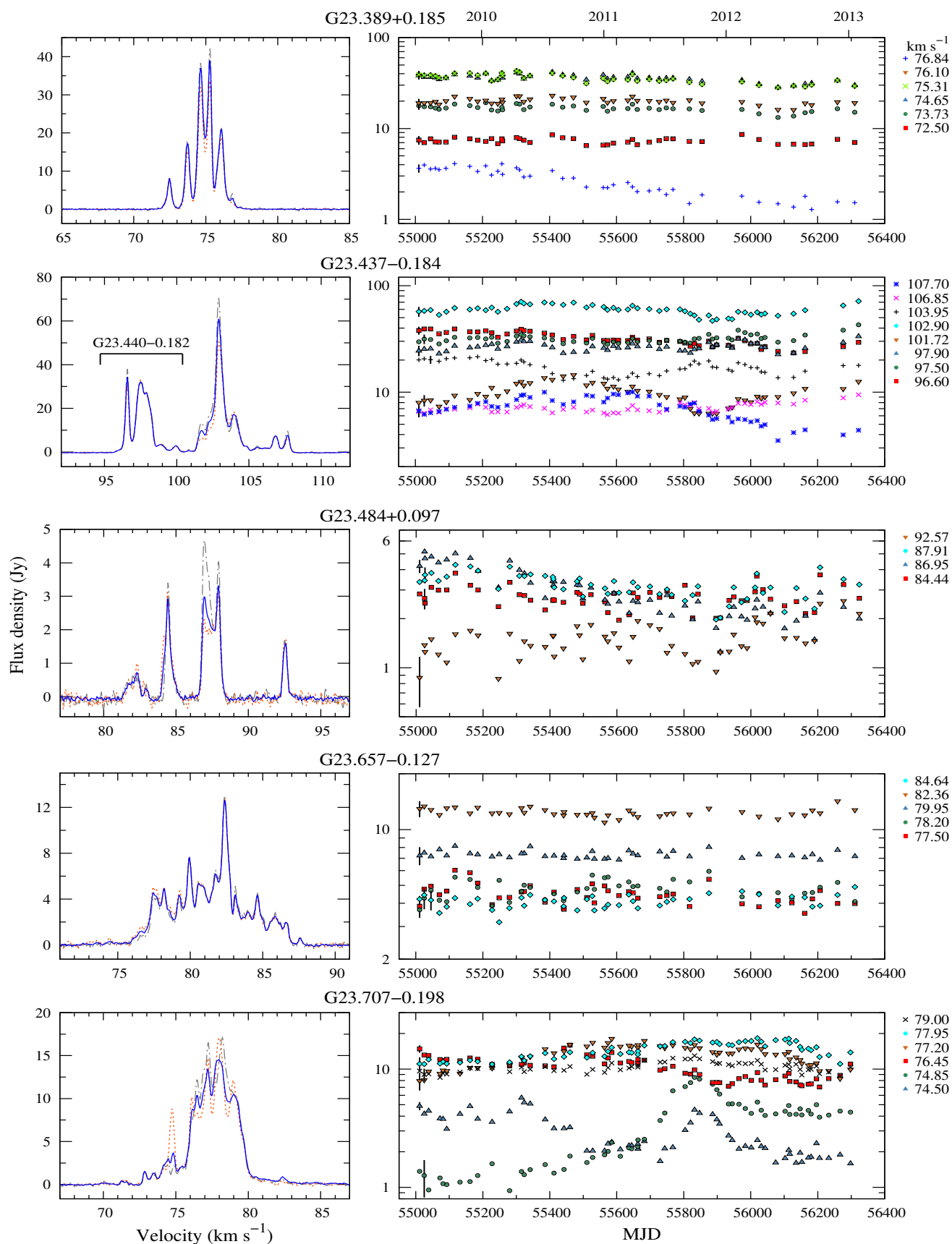


Figure 3 – continued

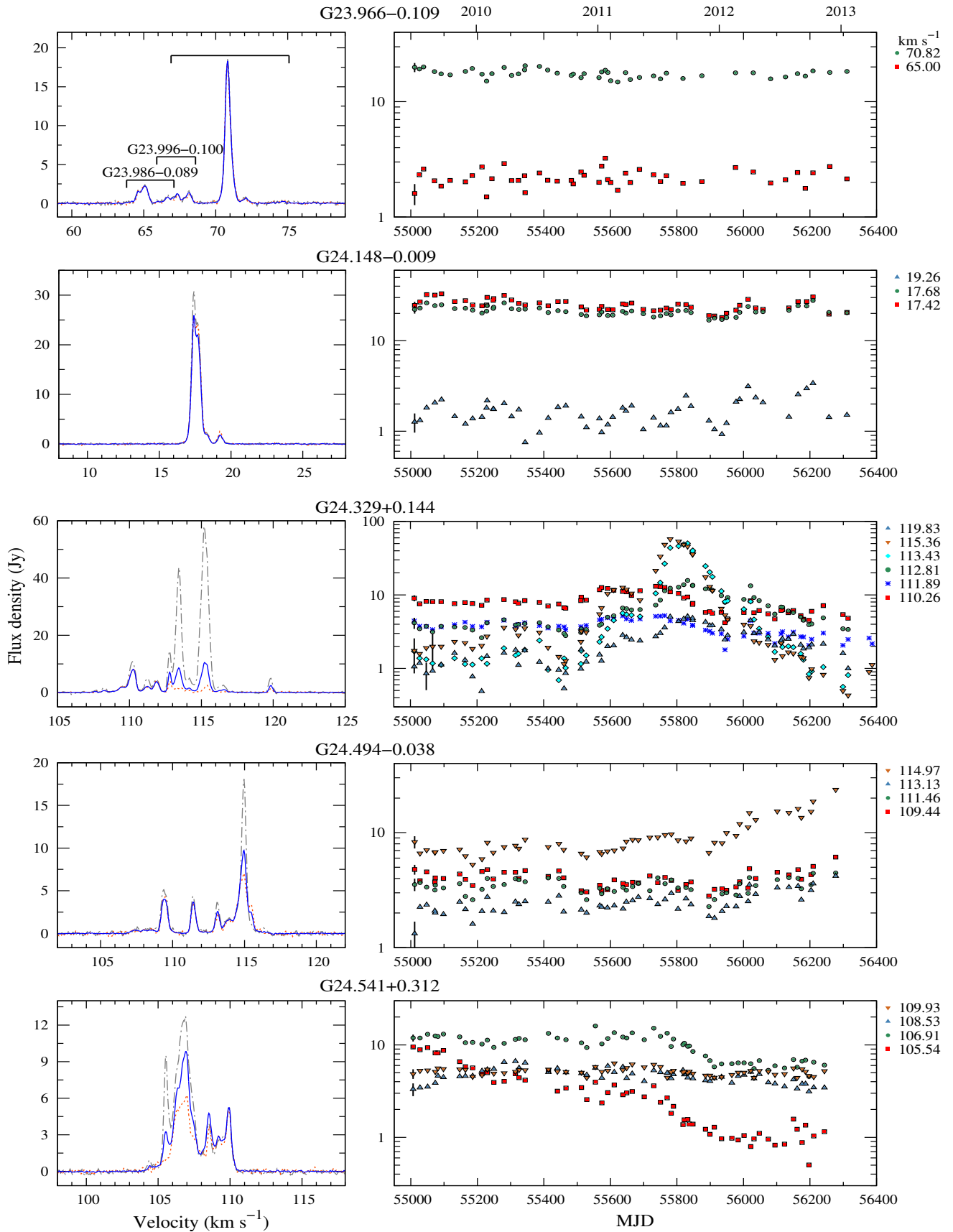


Figure 3 – continued

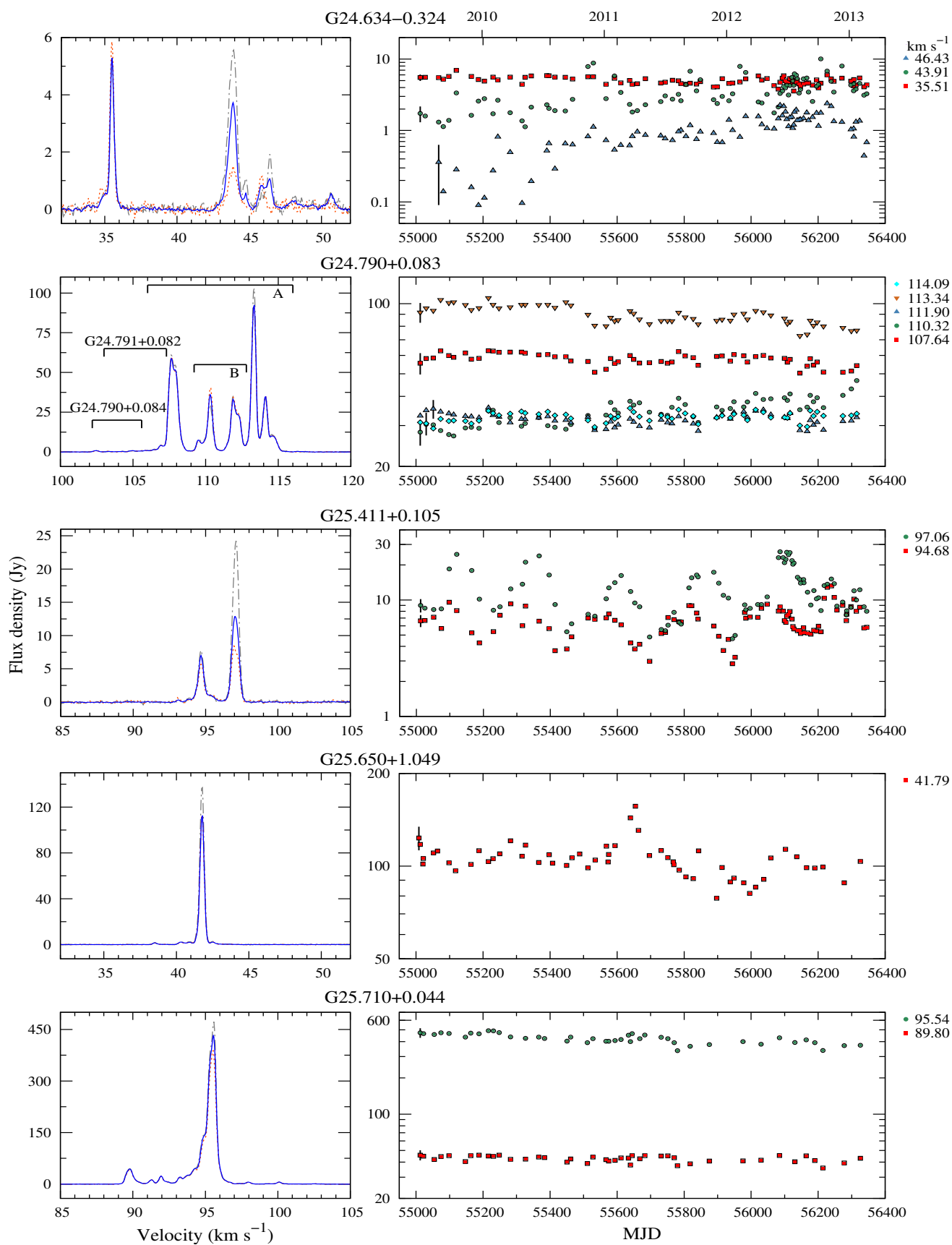


Figure 3 – continued

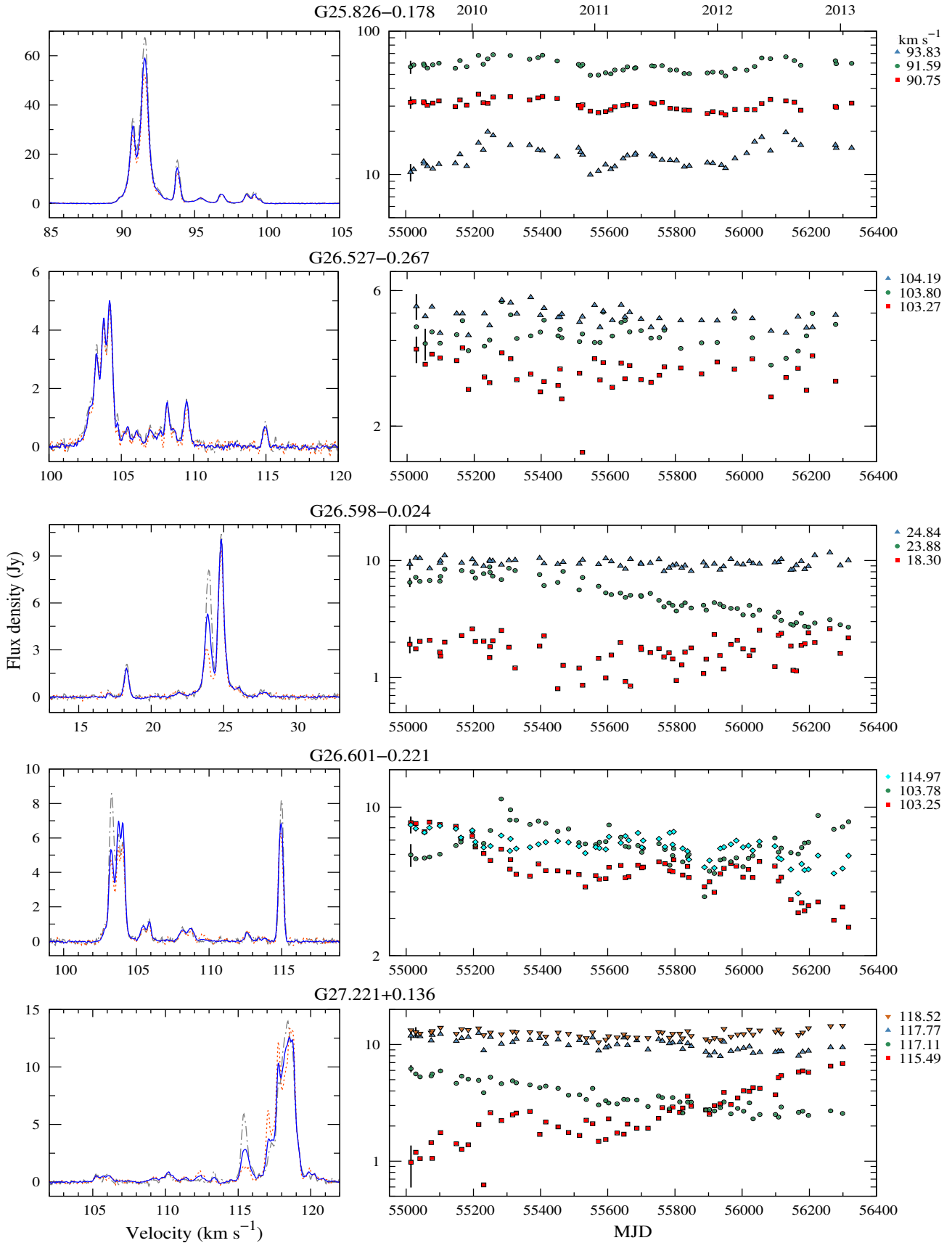


Figure 3 – continued

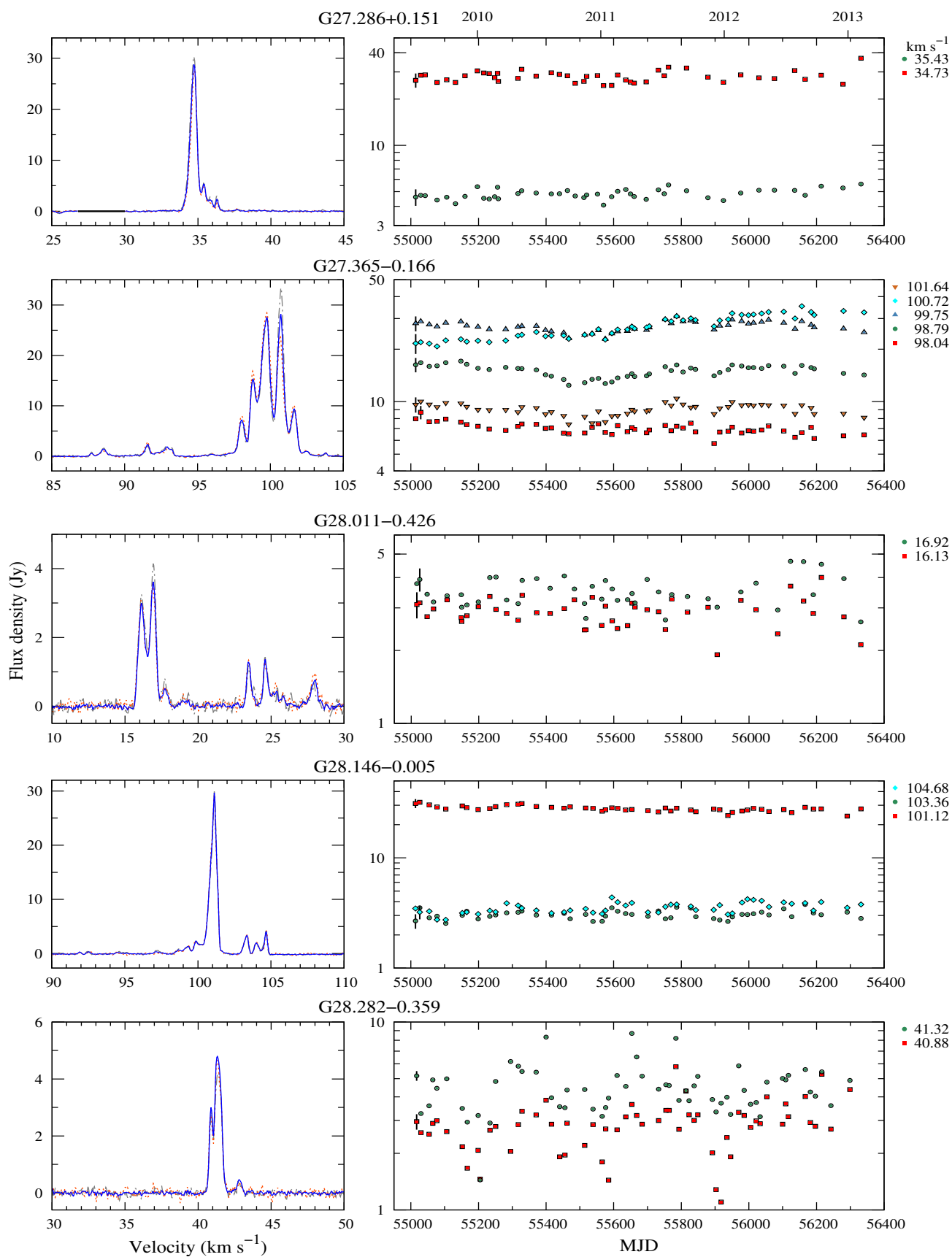


Figure 3 – continued

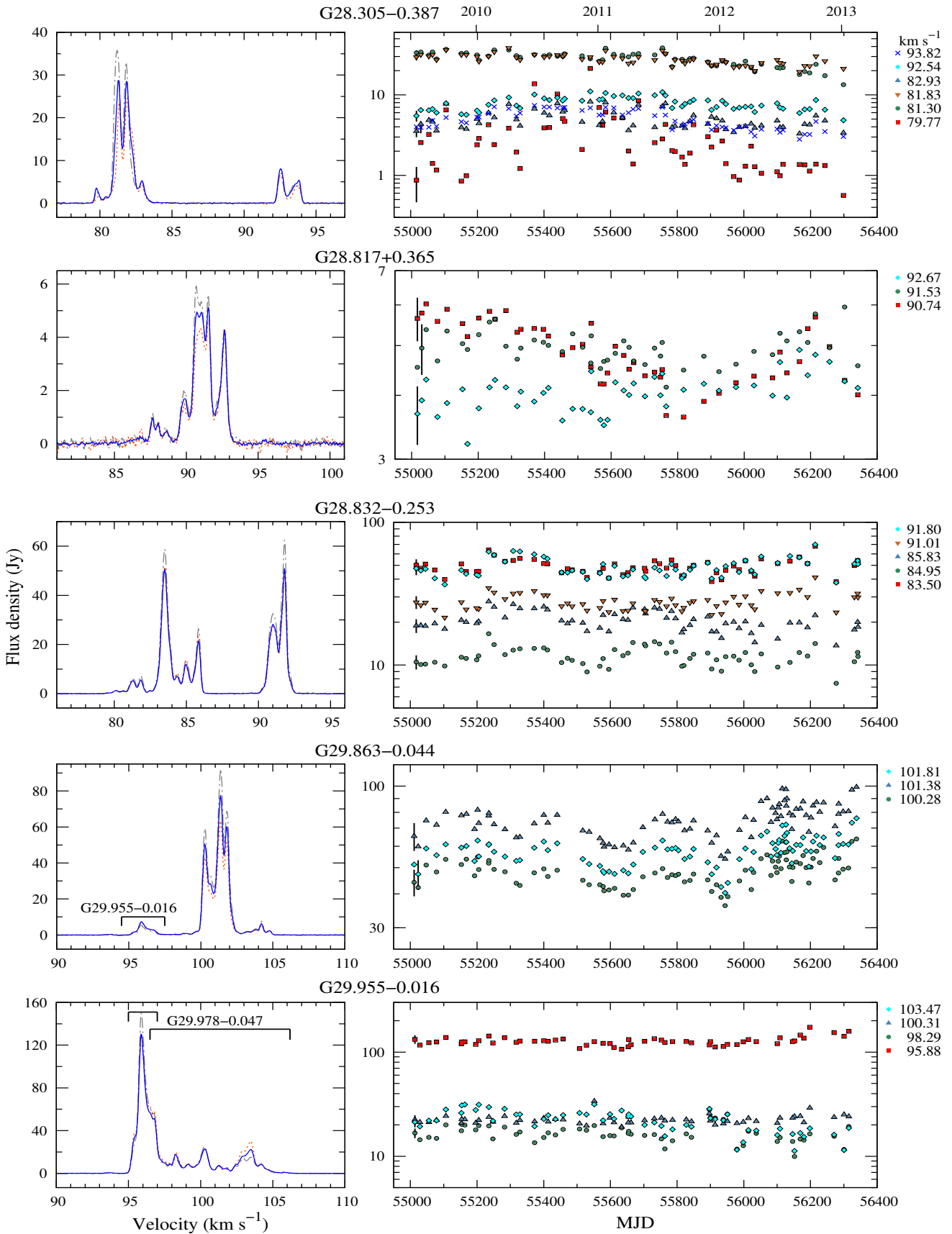


Figure 3 – continued

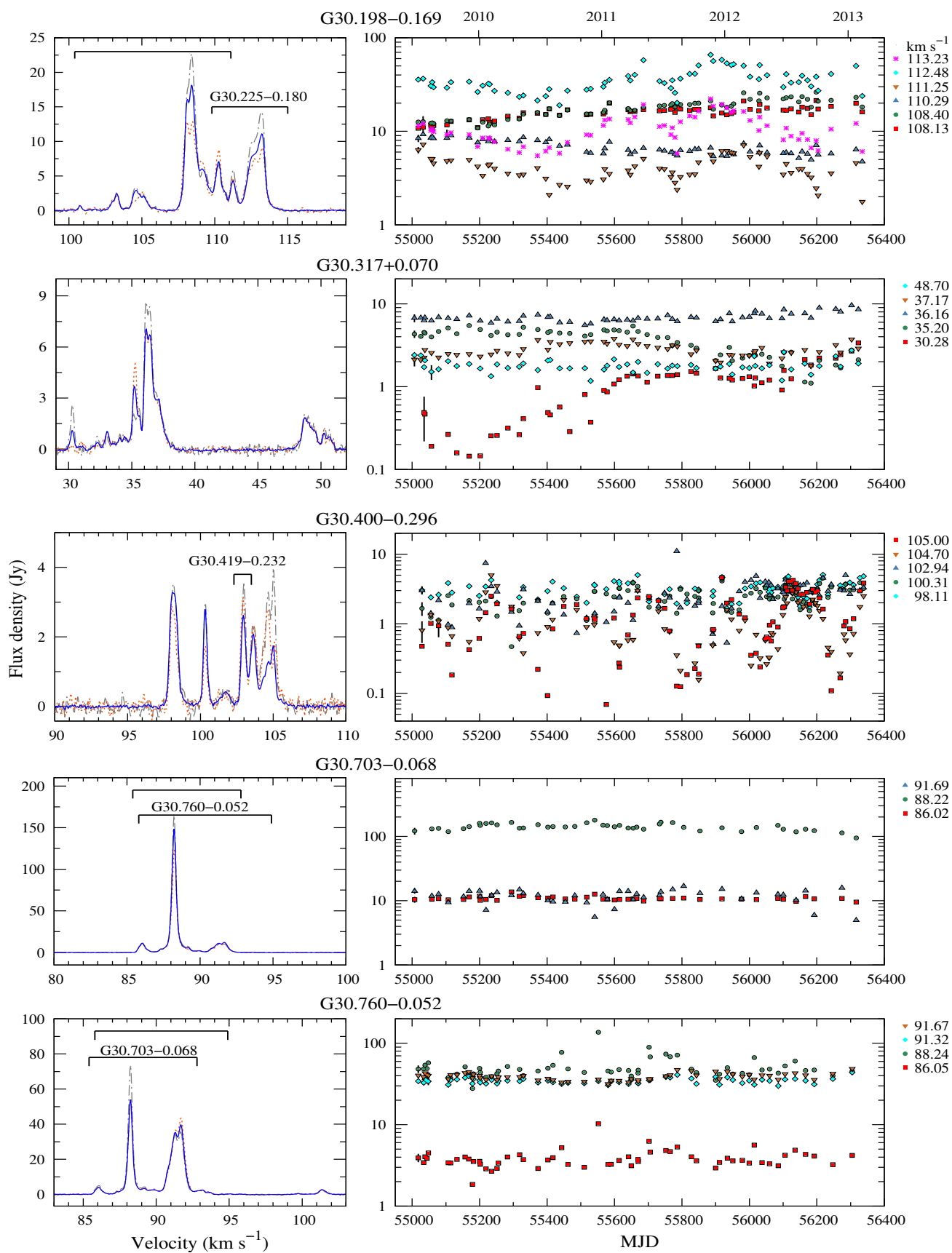


Figure 3 – continued

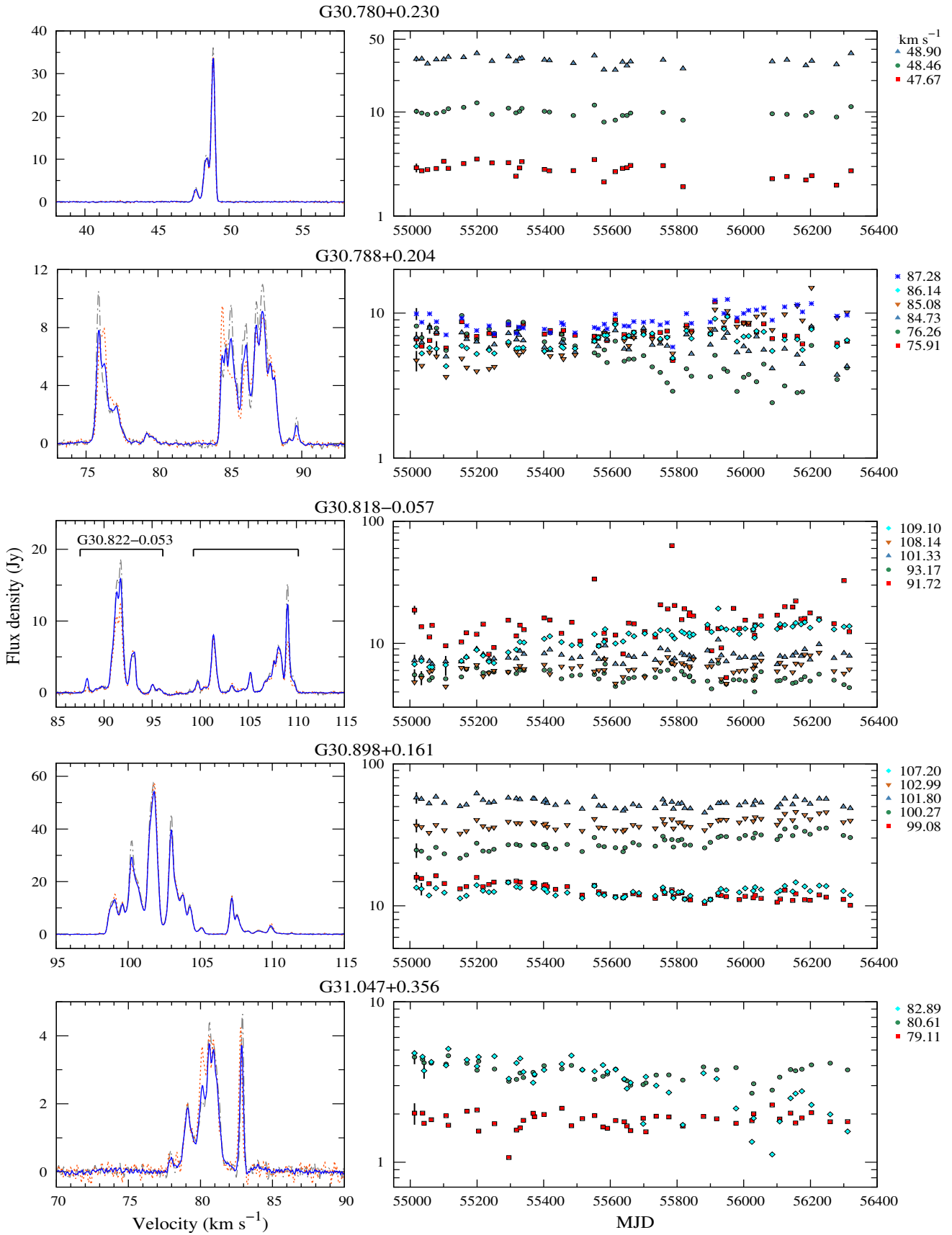


Figure 3 – continued

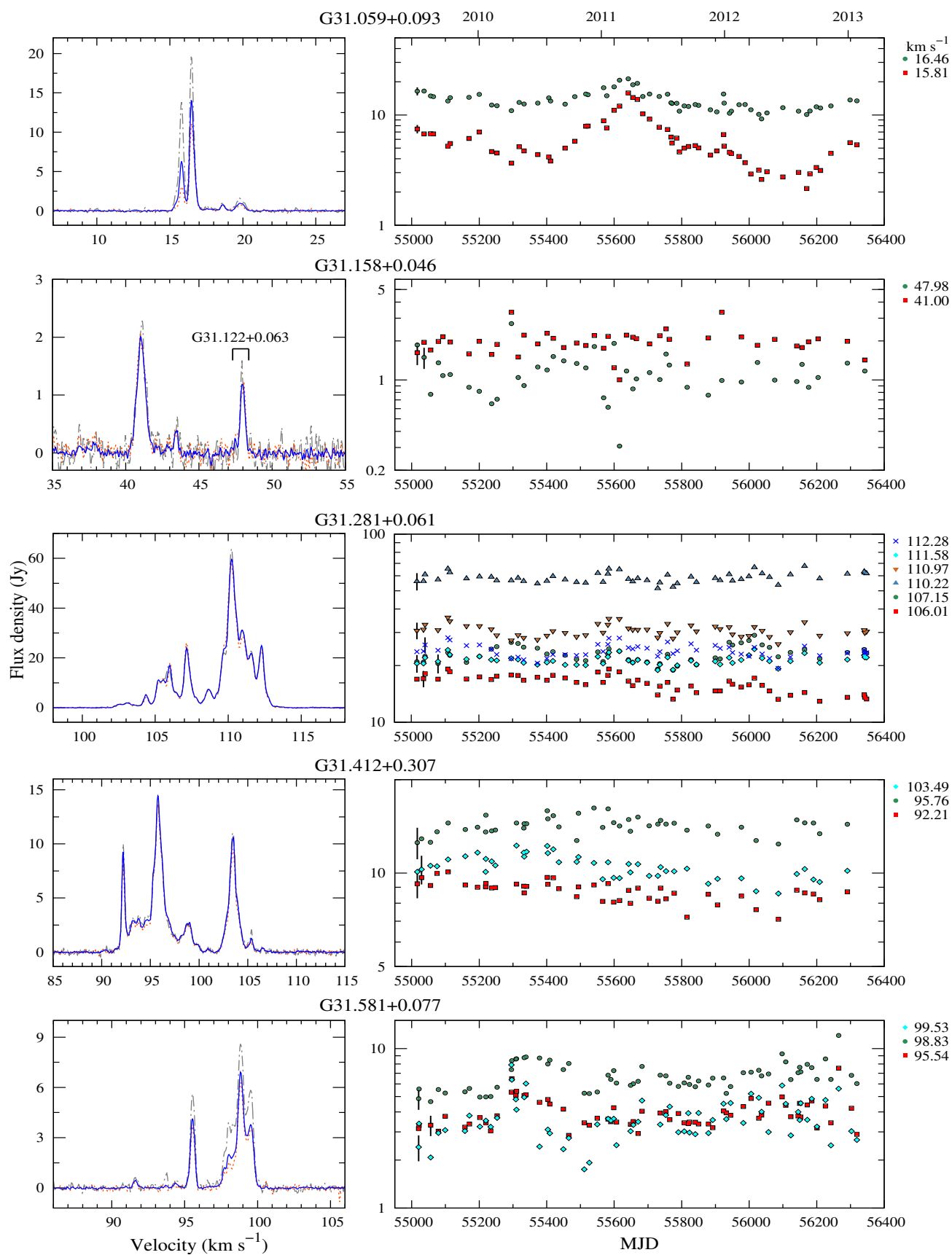


Figure 3 – continued

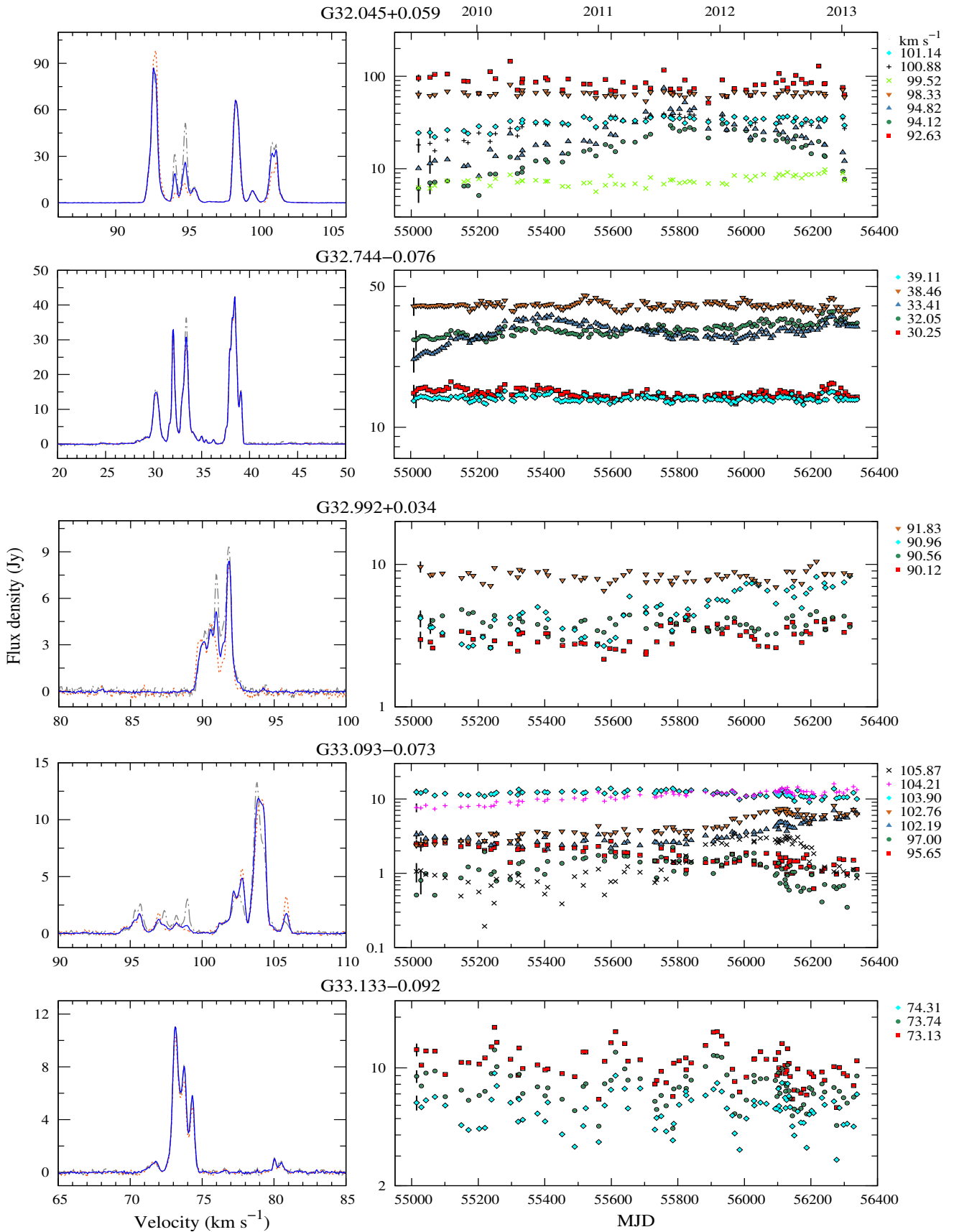


Figure 3 – continued

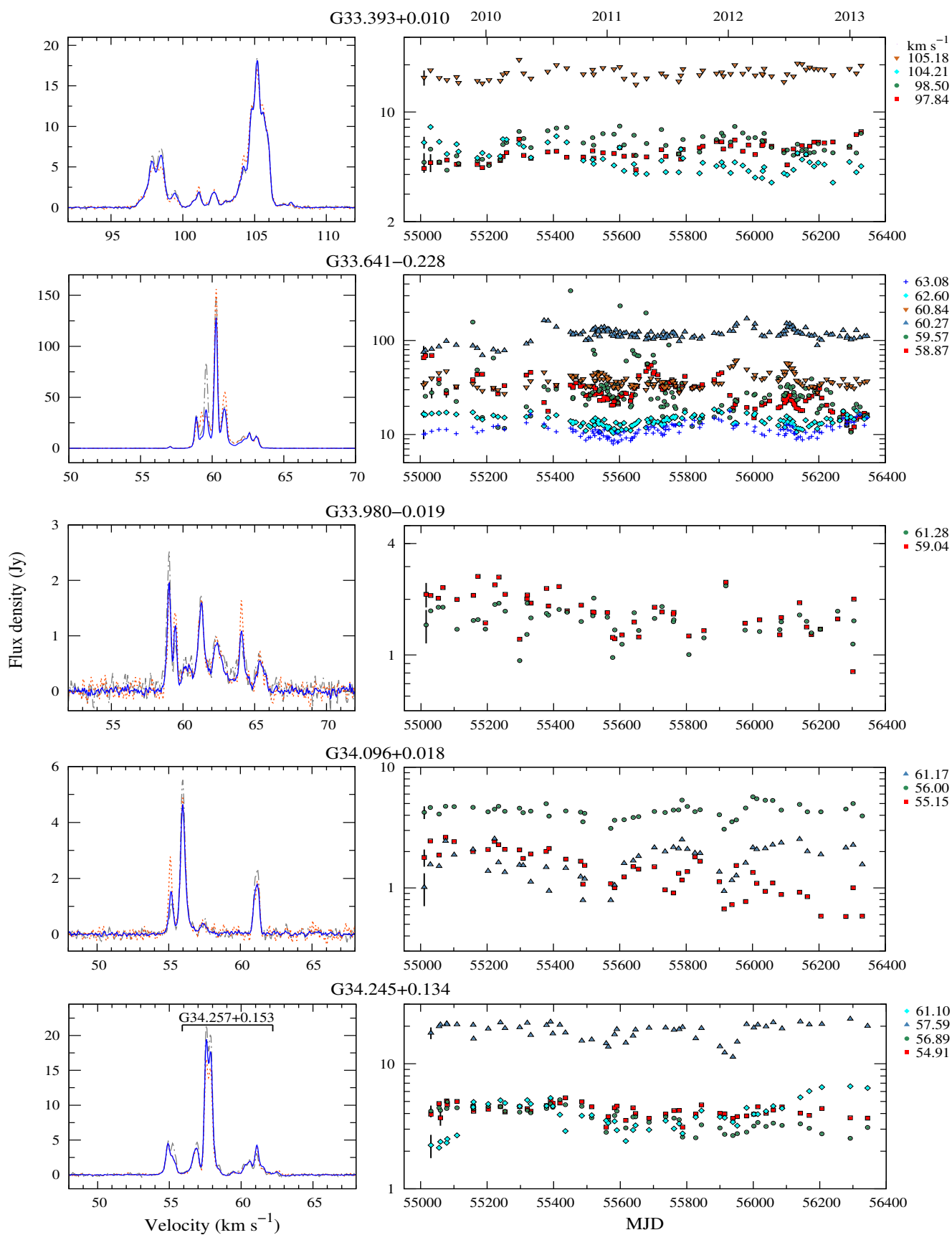


Figure 3 – continued

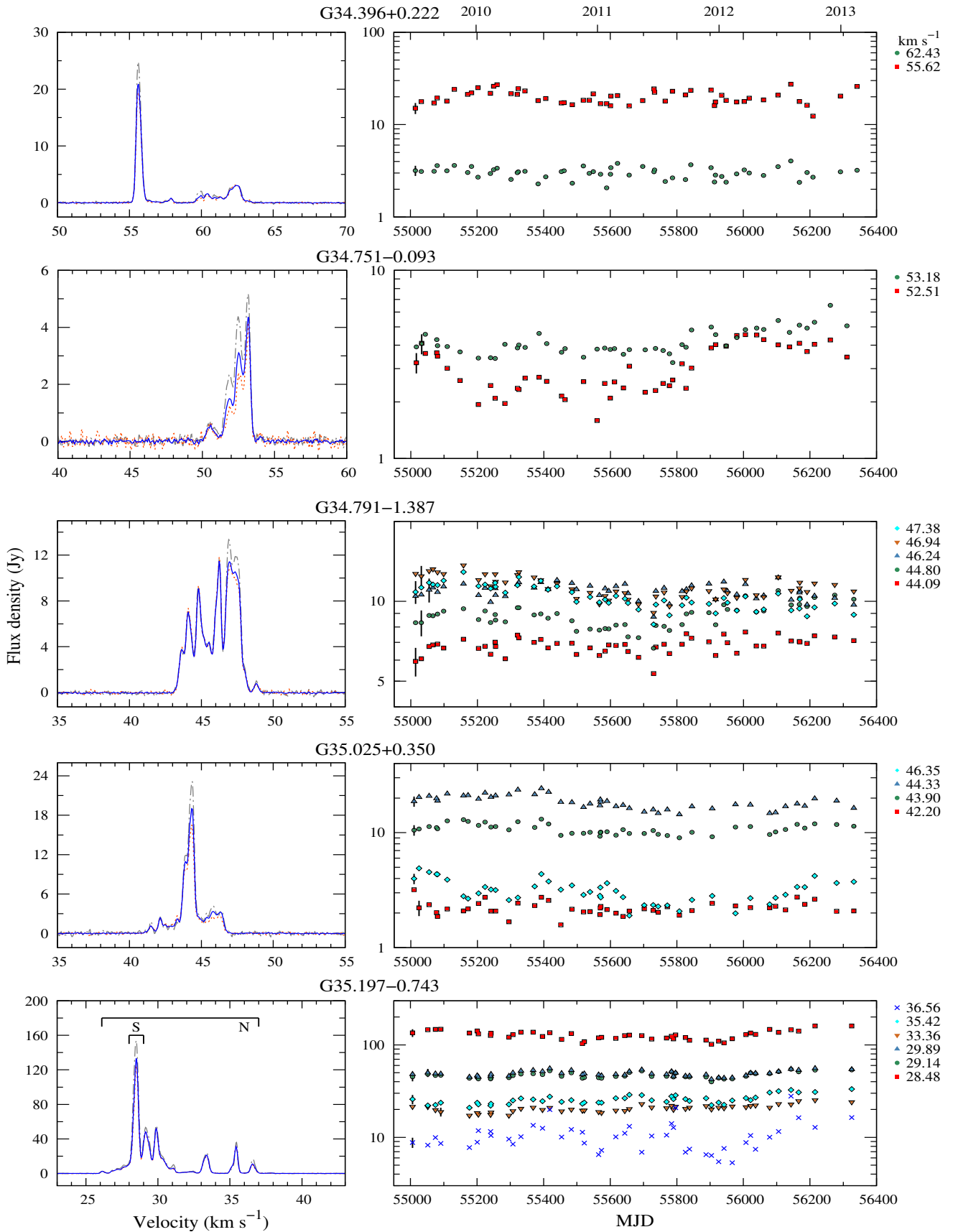


Figure 3 – continued

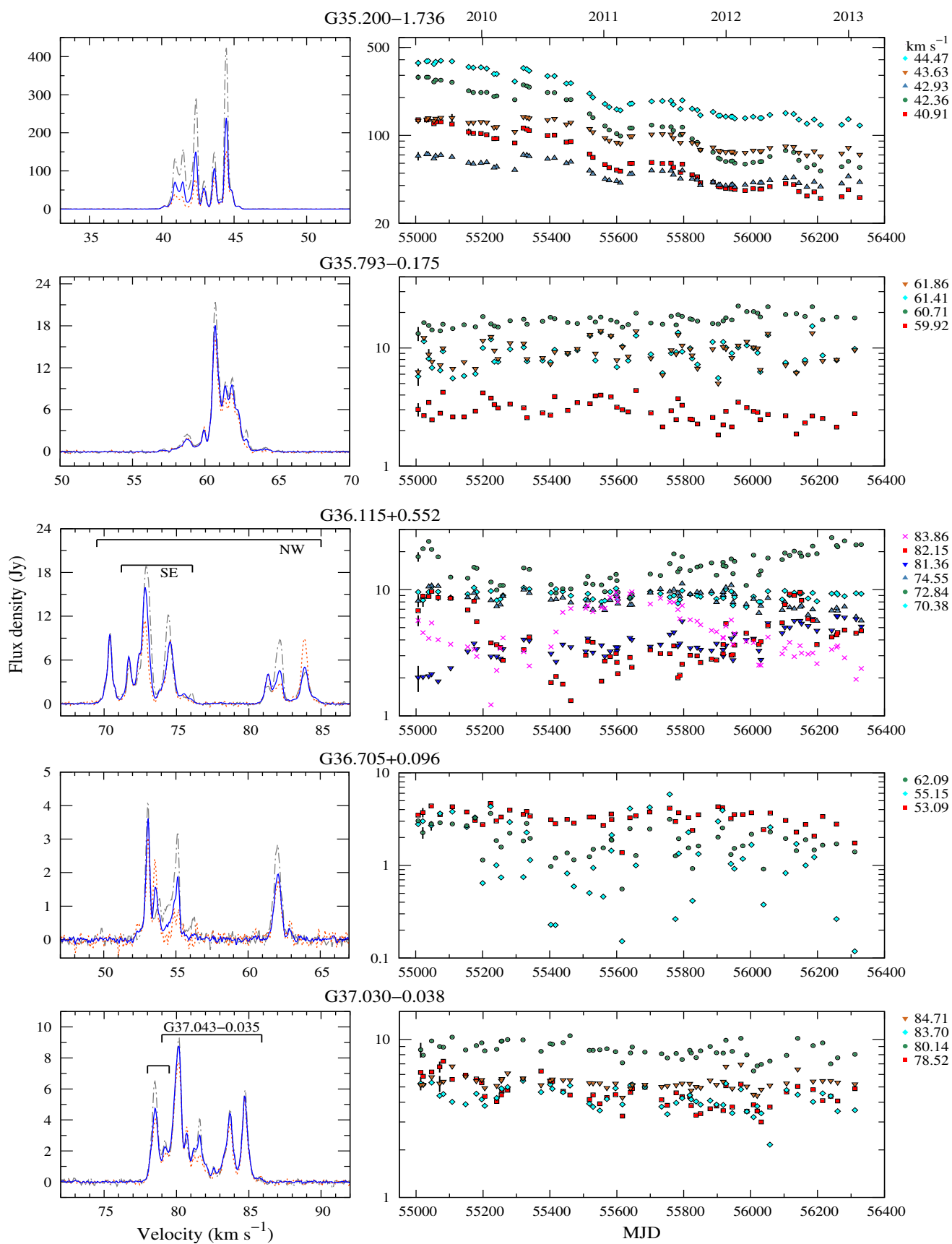


Figure 3 – continued

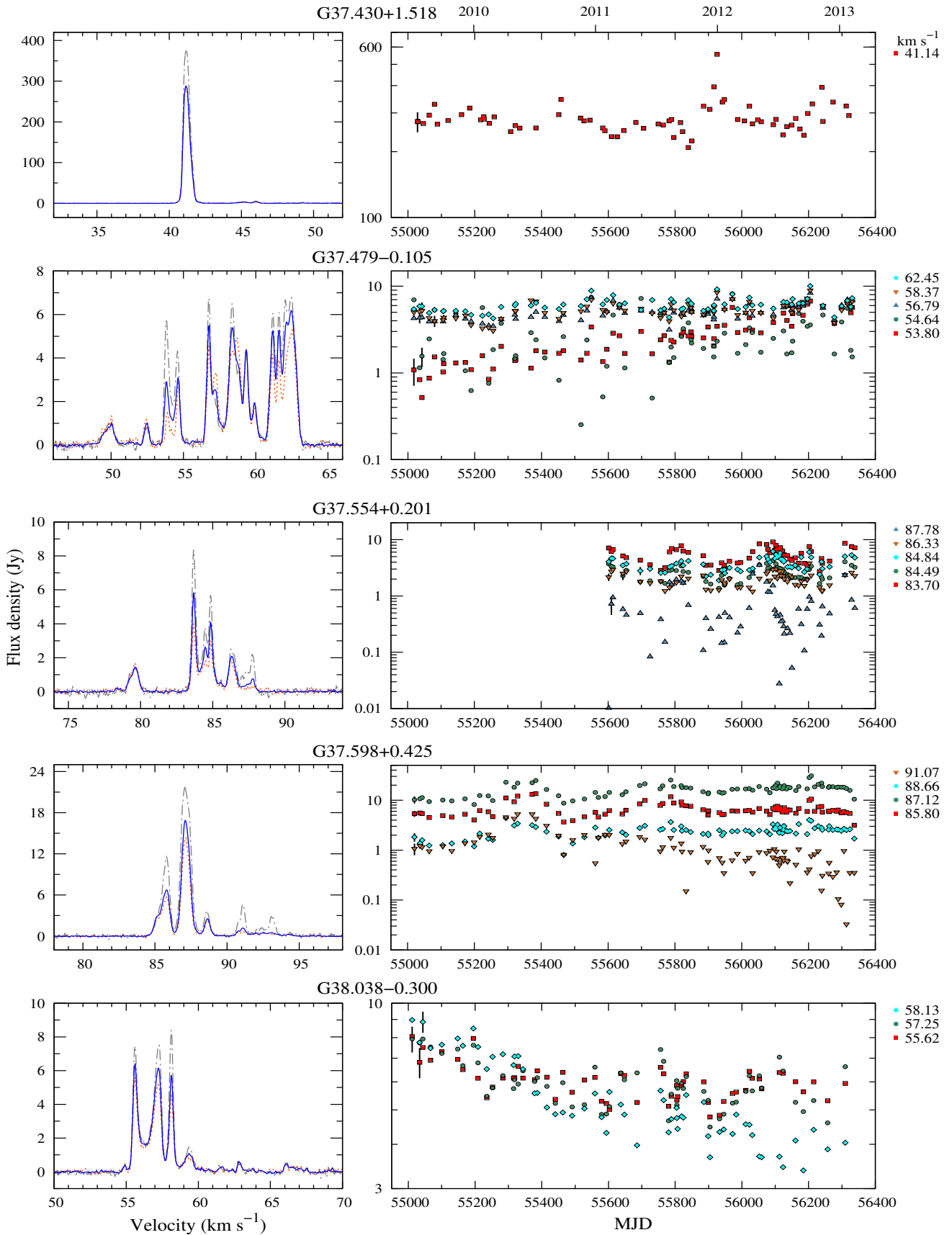


Figure 3 – continued

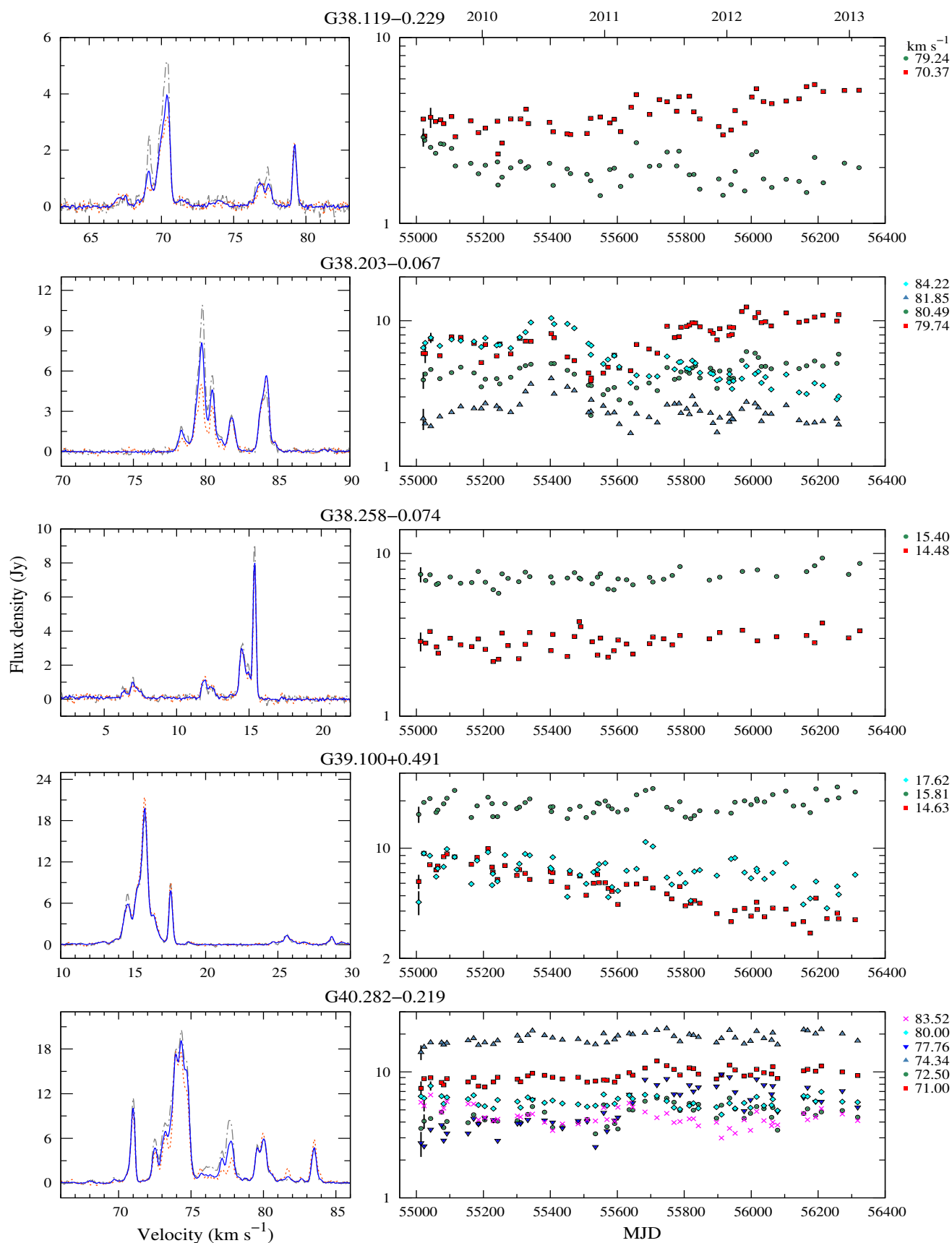


Figure 3 – continued

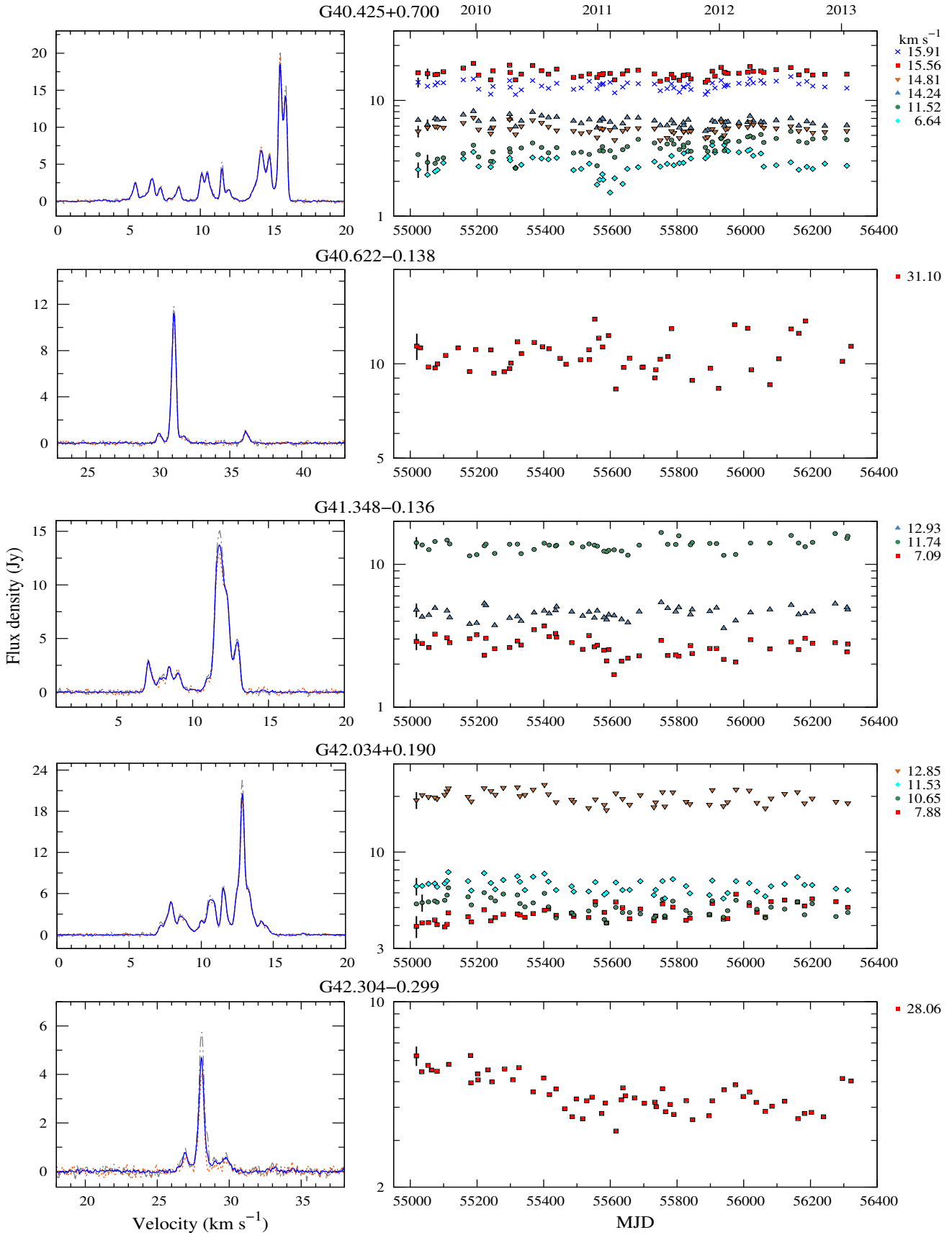


Figure 3 – continued

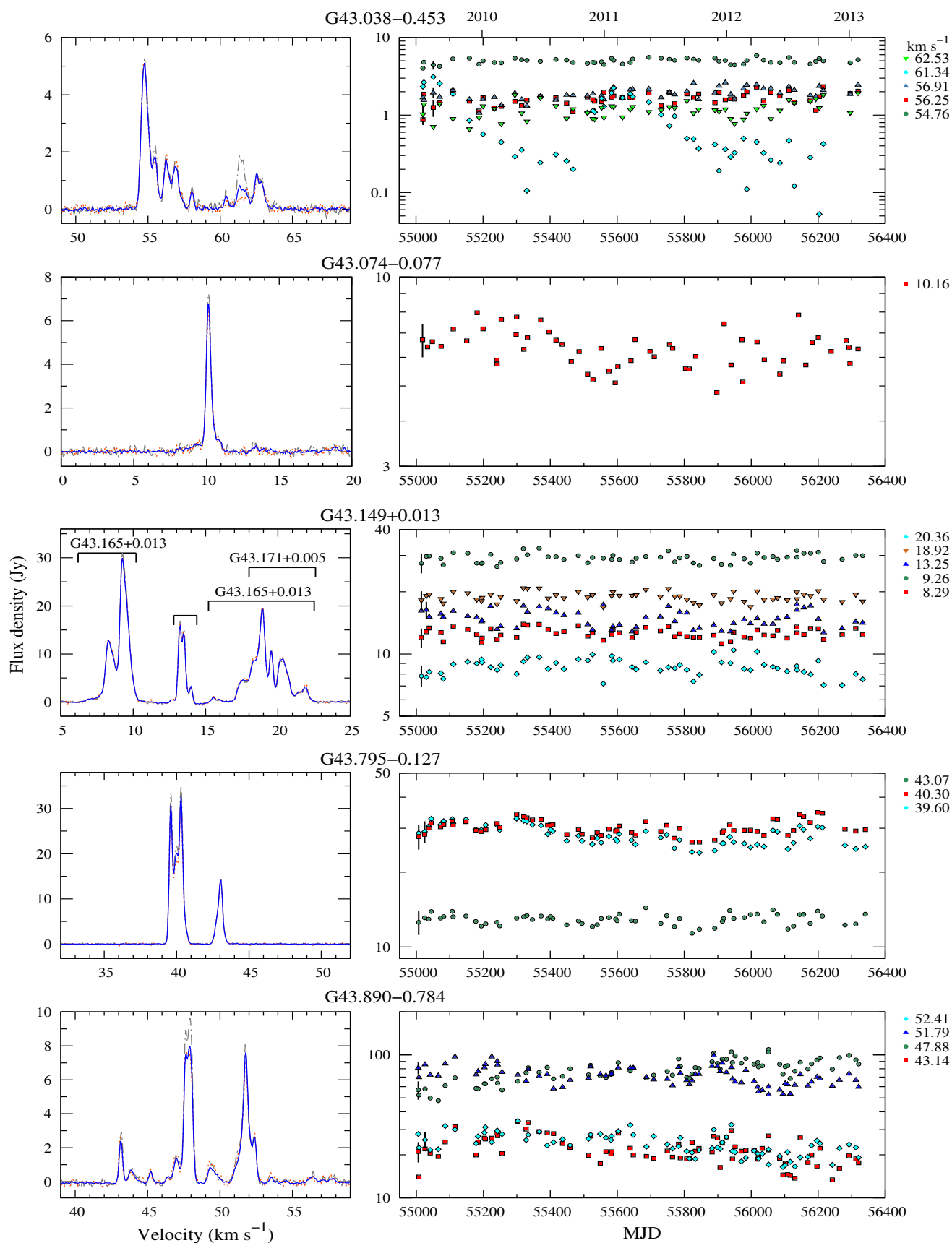


Figure 3 – continued

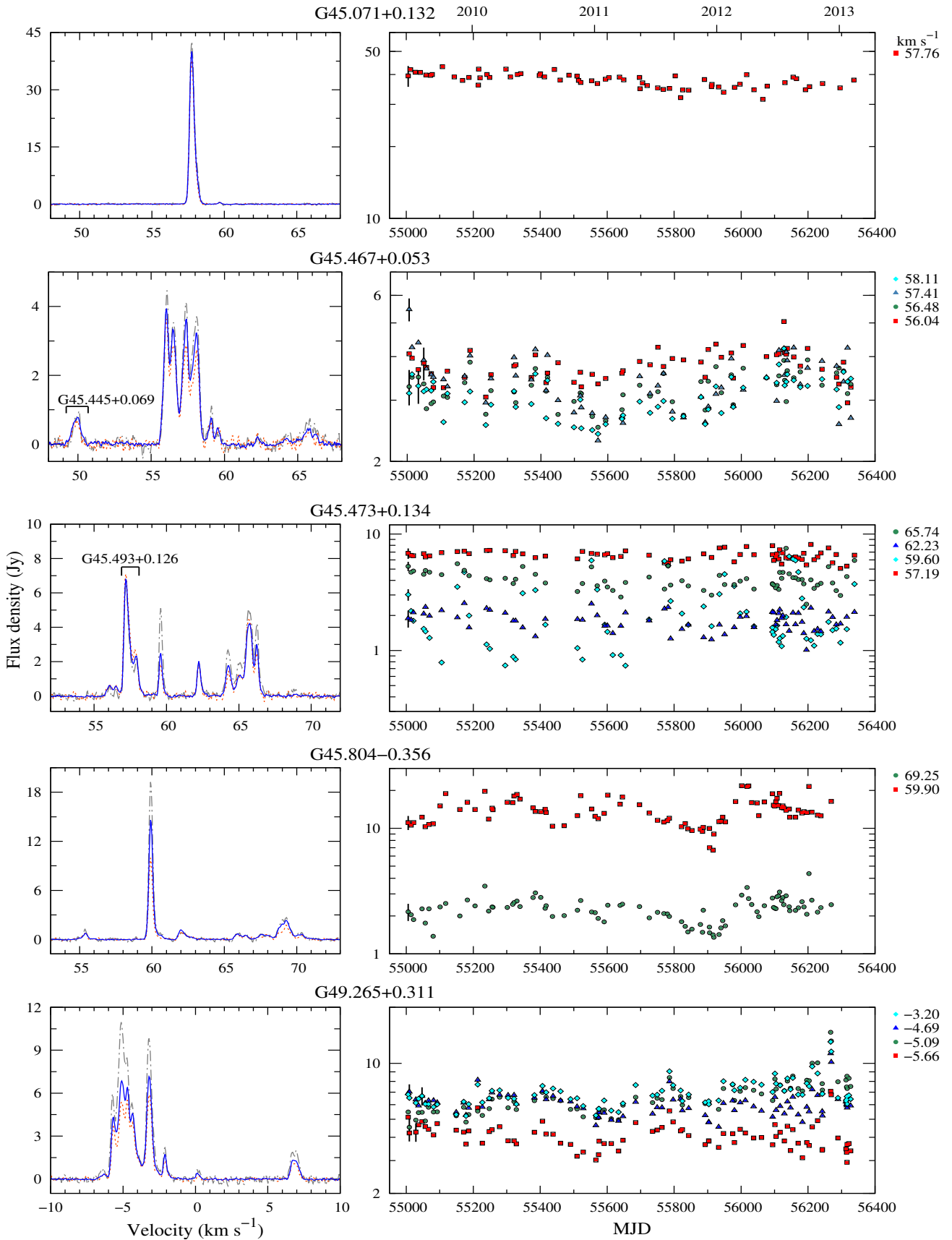


Figure 3 – continued

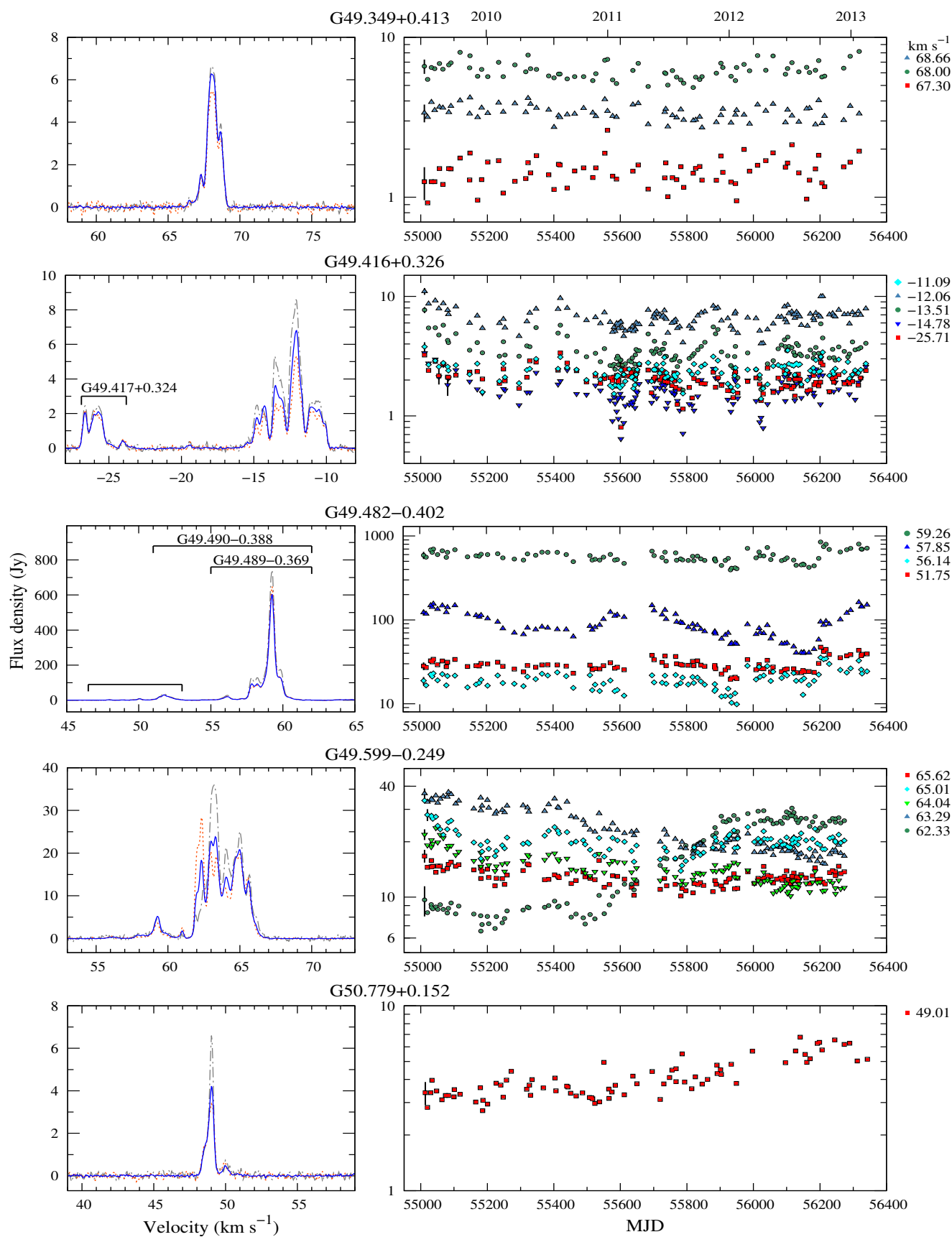


Figure 3 – continued

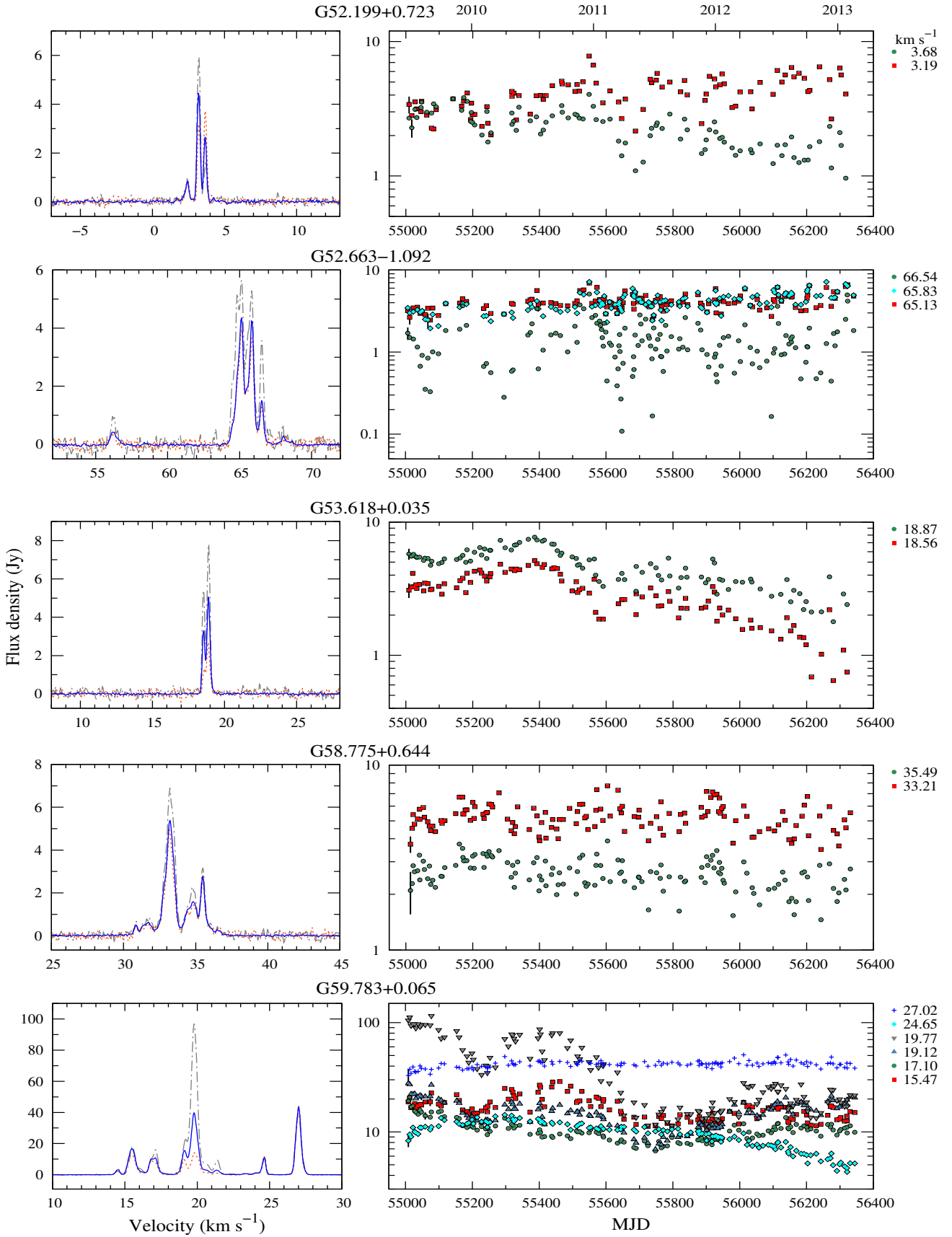


Figure 3 – continued

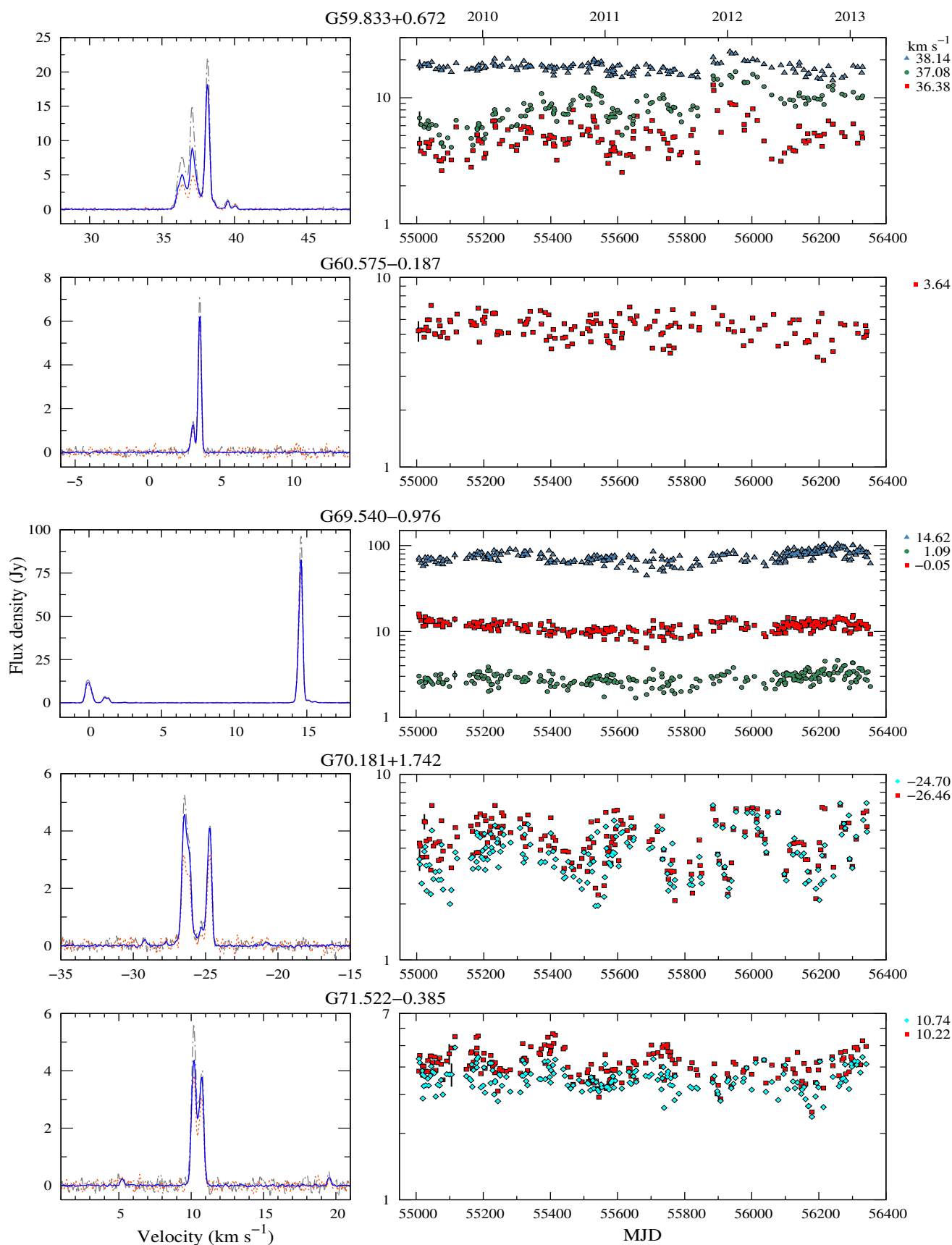


Figure 3 – continued

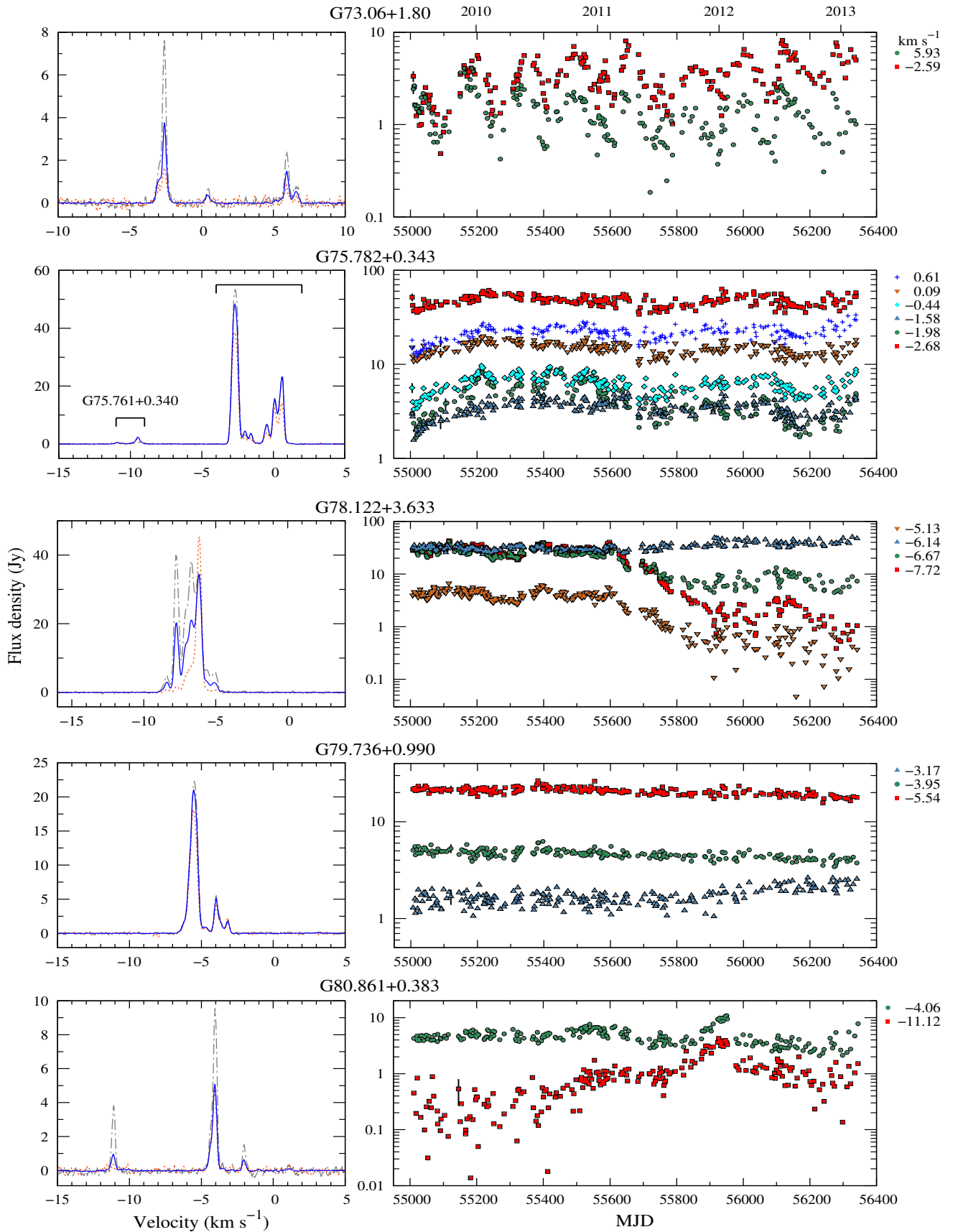


Figure 3 – continued

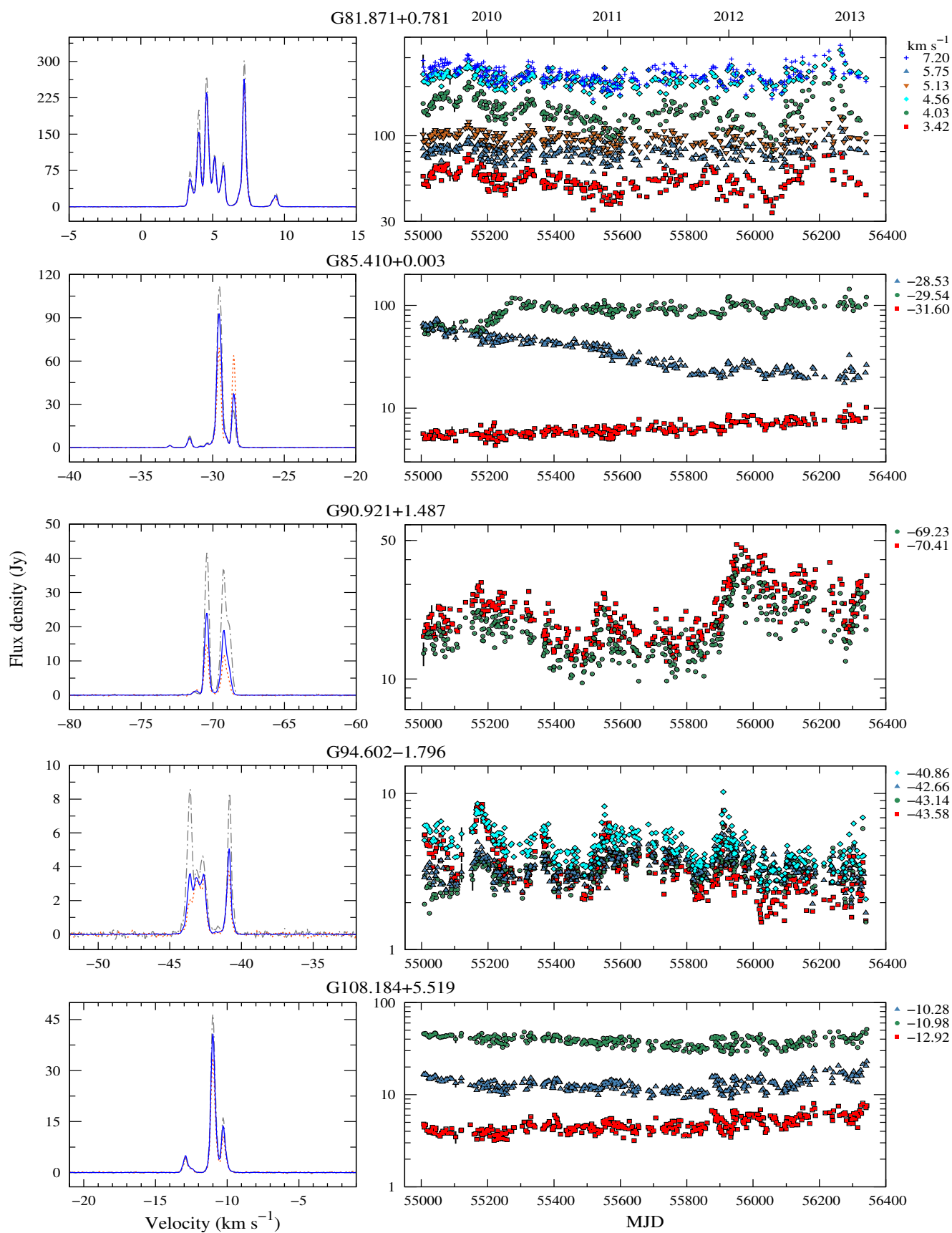


Figure 3 – continued

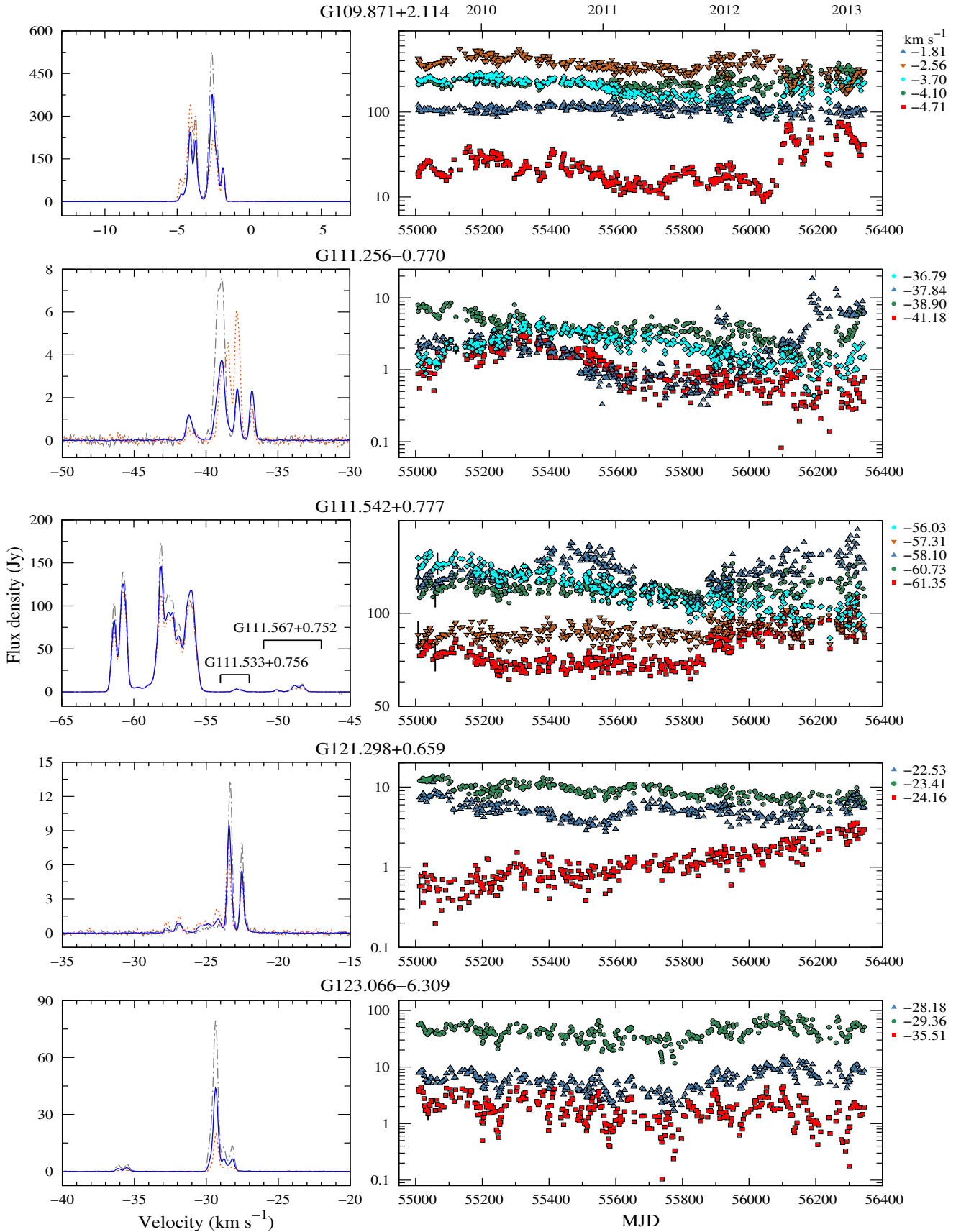


Figure 3 – continued

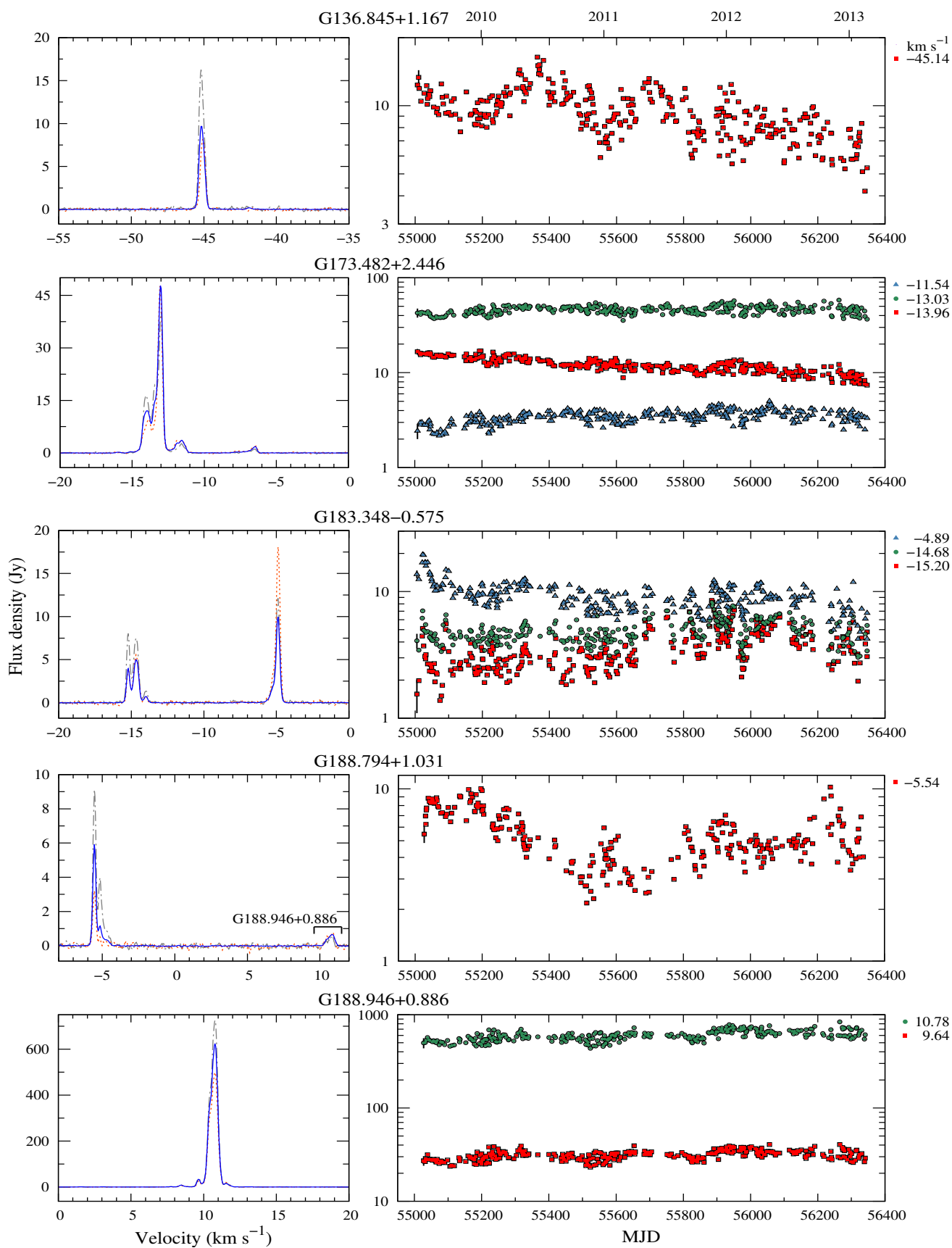


Figure 3 – continued

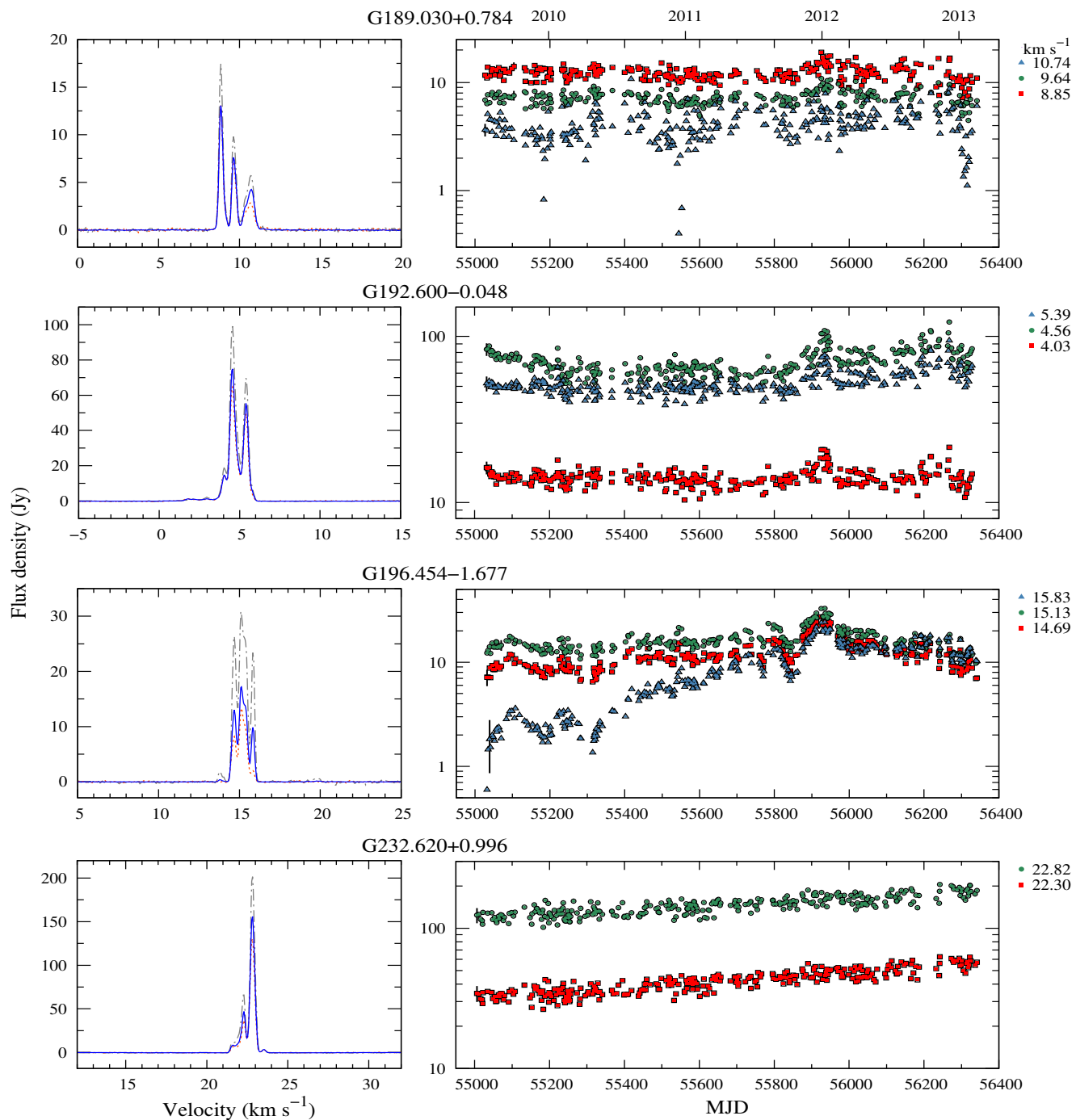


Figure 3 – continued

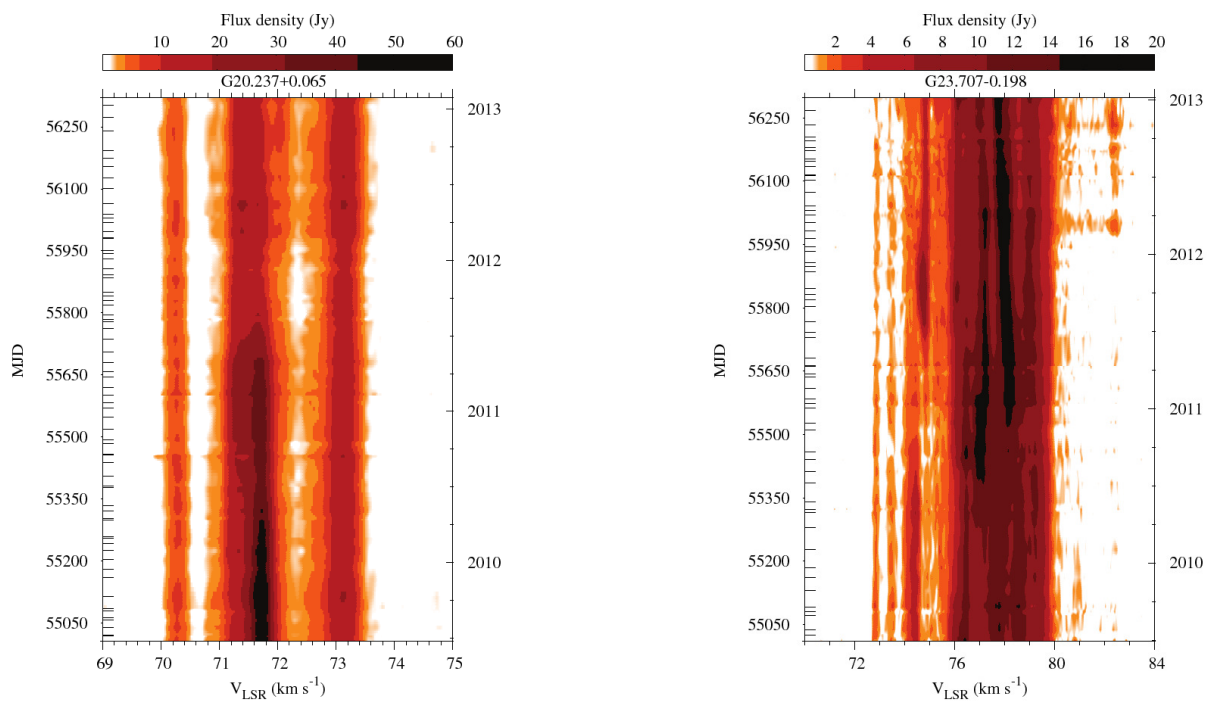


Figure A1. Dynamic spectra for sources with complex variability. The velocity scale is relative to the local standard of rest. The horizontal bars in the left coordinate correspond to the dates of the observed spectra.

APPENDIX A:

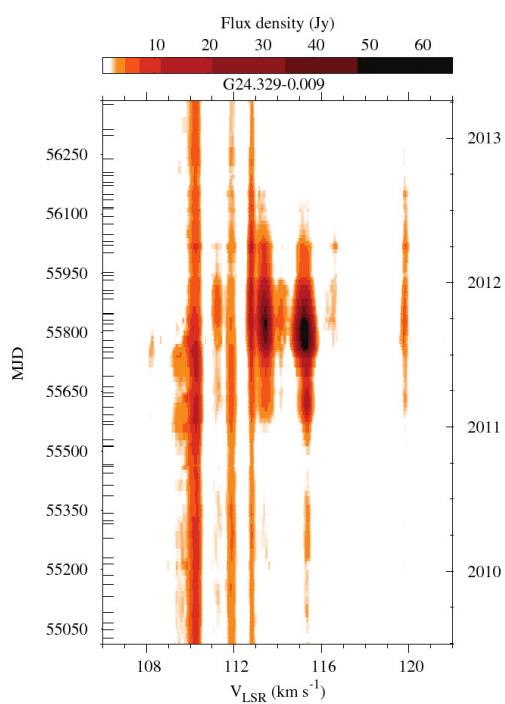


Figure A1 – continued

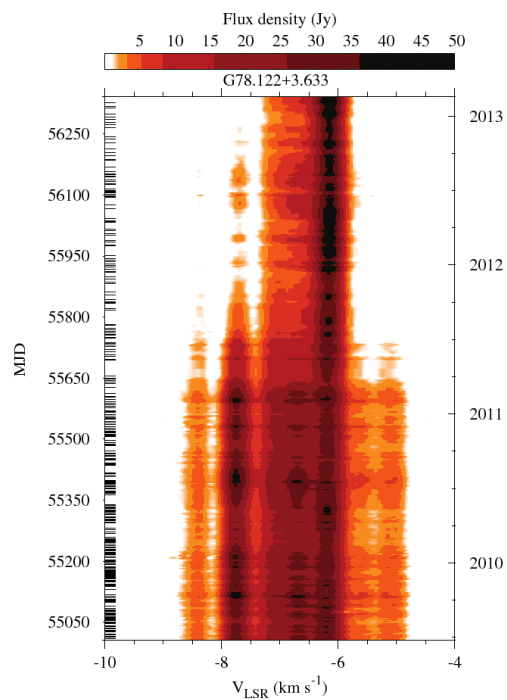
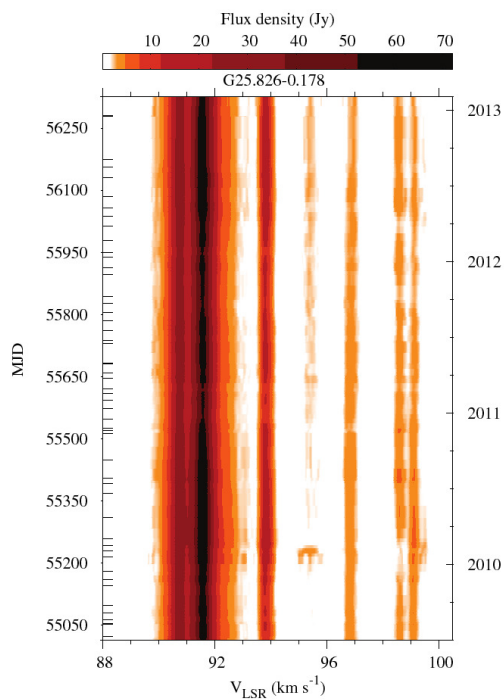
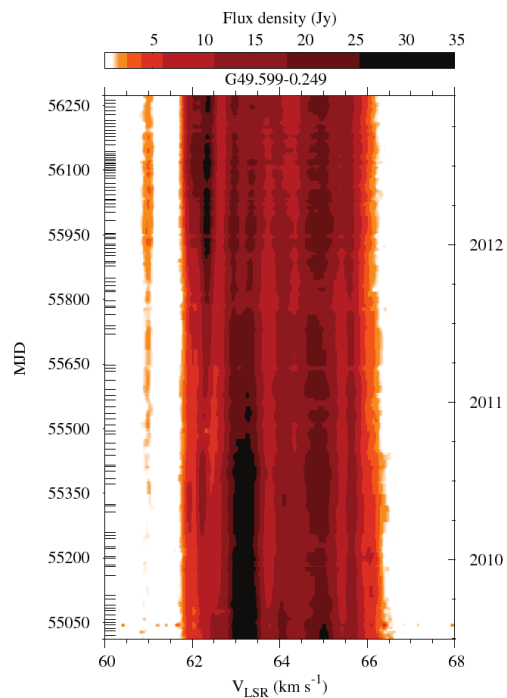
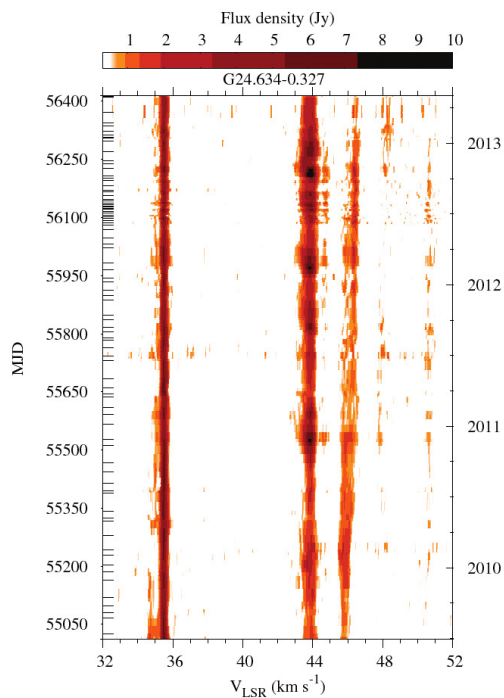


Figure A1 – *continued*

Figure A1 – *continued*

APPENDIX B:

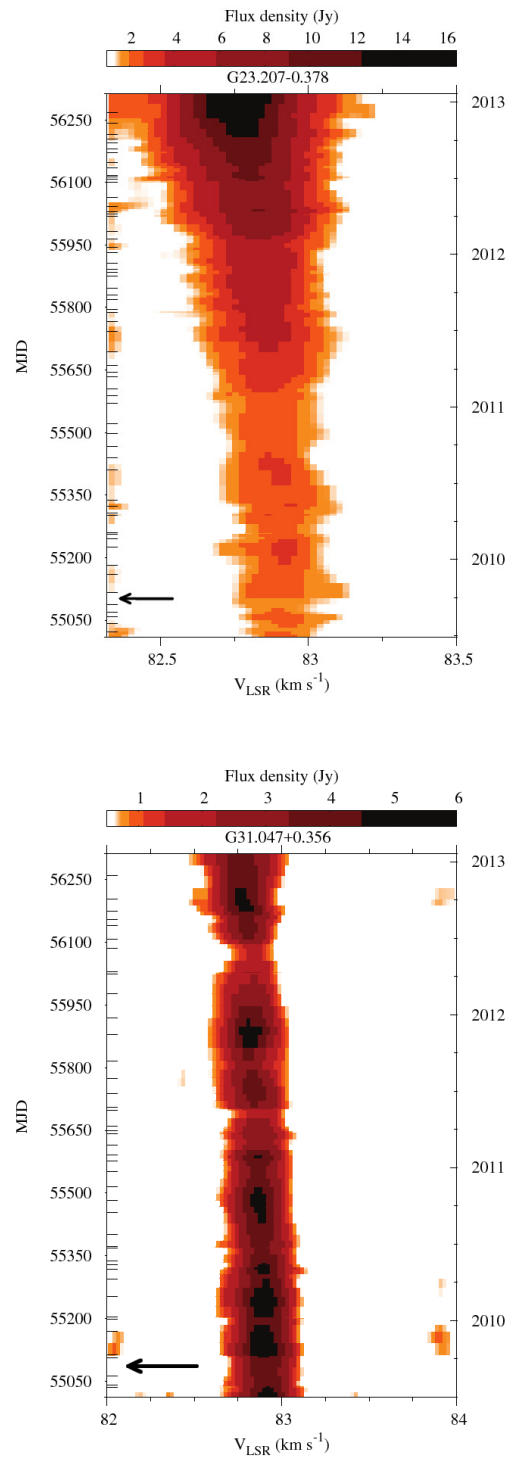


Figure B1. Dynamic spectra for features with velocity drifts. The arrow indicates the systemic velocity for each source.

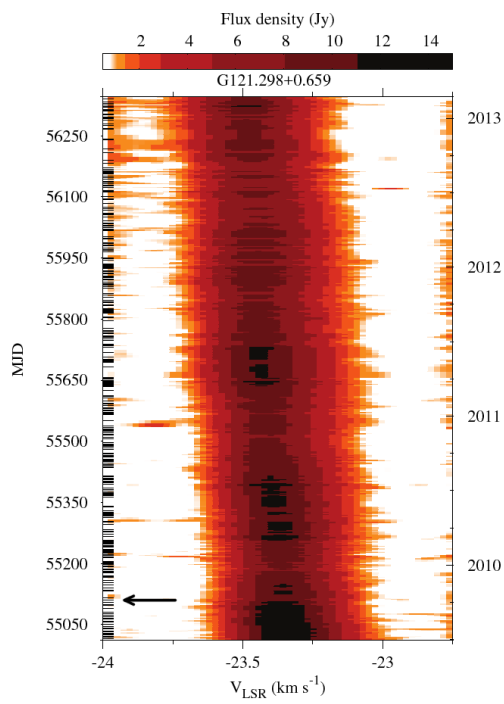
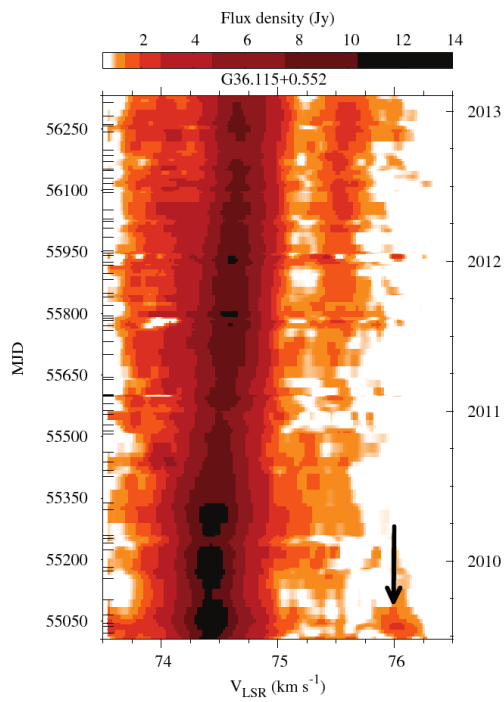


Figure B1 – *continued*